
Products Specification

Name: DMX touch screen master controller

Model: DMX501



1. Summary

DMX touch screen master controller is a kind of lighting controller which is based on intelligent system. The touch screen adopts the popular capacitive touch technology, It is a control panel using software virtual metallic. This software is easy to use and very simple for user-defined settings. It can realize a variety of lighting control effect quickly and easily.

2. Technical parameters

Working temperature: -20~70℃

Supply voltage: DC 12V,1A

Output: 1 channel DMX signal,can connect up to 64 DMX 1 channel to 5 channels device.

Connect way: DMX signal line

Packing size: 245*165*60mm

External dimension: 210mm*127mm*45mm

Net weight: 721g

Gross wet:876 g

Static power consumption: 12W

3. External Dimension



4. Interface instruction



1. Power input port (DC12V);
2. DMX signal output

5. Function Instruction

(1) Introduction of system function in different areas

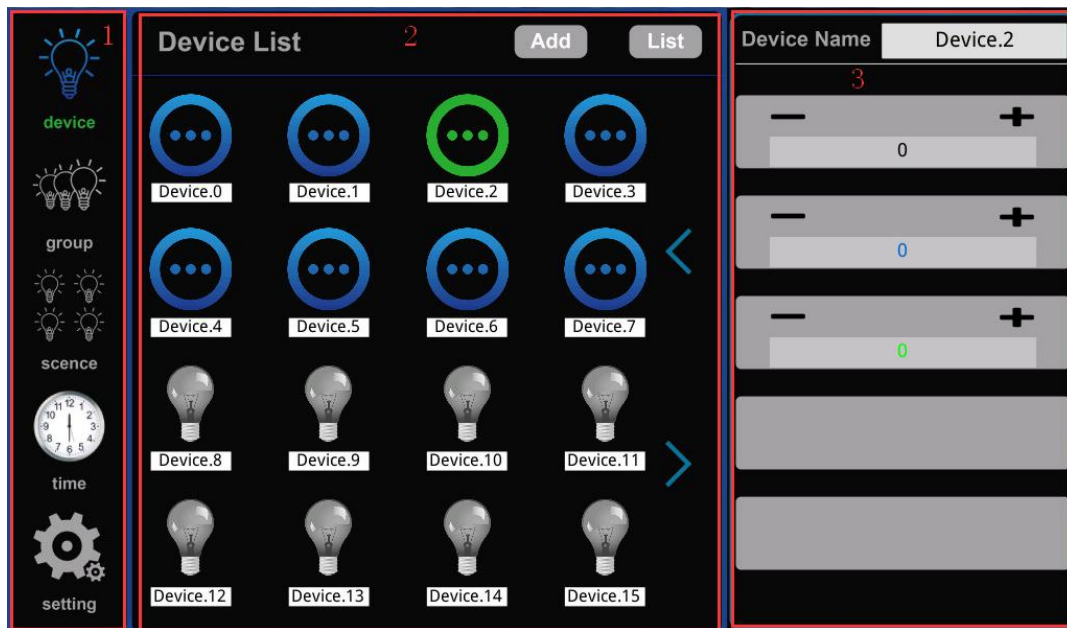


Figure1

As showed in figure 1, this system was divided into 3 areas as follows:

5.1.1 system menu(number 1 showed in figure 1):it includes 5 function button: device, group, scene, timer and setting.

5.1.2 Content pane:(number 2 showed in figure 1): display device information(device quantity and name)、group information(group name and picture).

5.1.3 scene information(scene name and picture).timer information (timer name).setting information:(time calibration, installation testing, reset, help and property).

5.2 Introduction for software function

5.2.1 Device control: choose one terminal device to control, eg: control the brightness.

5.2.2 Group control: choose a group to add or delete devices, or you can group control the brightness. When you are using grouped controls, the brightness for this group will be the same.,

5.2.3 Scene control: Choose one scene to add or delete devices. The brightness of the lamp in this scene can be different. It is more flexible than group control. Scene can be applied to timer.

5.2.4 Timer: choose one timer to set (time or scene name), after the timer start, it will execute the corresponding scene in the time you set. You can turn on or off all the timer at the same time, or, you can turn on or off one timer respectively.

5.2.5 setting: brightness adjustment;Restart the machine, click restart now, no prompt;The local data will be restored to the factory state (the default password (686890) or the user-defined password will be required);All the following devices, including the machine, will be restored to the factory state (password will be required, which can be the default password (686890) or the user-defined password);Screen break time (unit second);Lock screen password setting.

5.3.Instruction for software system

5.3.1 click the lock button in the interface (as shown in figure 2) to enter the unlock password to enter the user interface. The unlock password can be either the initial password (686890) or the user-defined password. After input, press enter to confirm.



Figure 2

5.3.2 device is a single-set page. The machine can add up to 64 DMX lighting devices in circuits 1 to 5. When the machine is started up, the device icon is gray, indicating that the machine does not have any devices. Click "ADD" to ADD devices, as shown in figure 3 when it is finished.

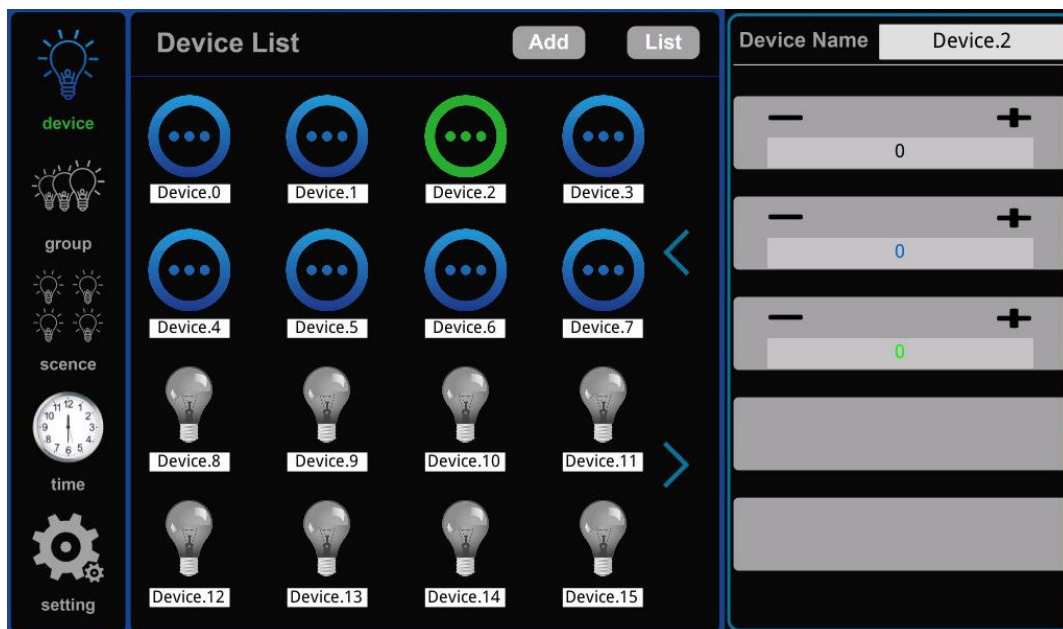


Figure 3

The added DMX lighting device can be one of the 1-5 circuit lighting devices. The gray device icon is the deleted device, as shown in figure 4. After selecting the lighting device to be added, click "X" to return to the single-set page. The device icon will turn blue, indicating that the device has been added successfully. At the same time, the light device icon can be selected, the currently selected device icon is

green;When selected, the currently selected lighting device can be controlled.The red box in figure 3 is the Device attribute, and "Device name" shows the name of the currently selected Device. Long press the gray area to modify the Device name (the keyboard dialog box will pop up after long press, as shown in figure 5, and click enter button after modification).The gray rectangle below the device name shows the device brightness adjustment button, and the device brightness adjustment button will display along with the currently selected light device loop. If a 3-loop light device is added, the brightness adjustment button will display 3 (up to 5 device brightness adjustment buttons).The "-" and "+" on the brightness adjustment button can fine-tune the brightness of the currently selected device, and the slider can significantly adjust the brightness of the currently selected device.

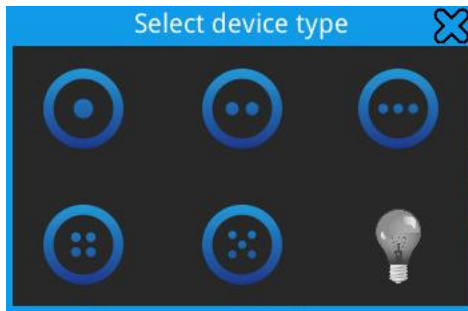


Figure4



Figure 5

5.3.3 group is the group page. Click the "group" button to enter the group page, as shown in figure 6. "Group name" shows the Group name of the currently selected Group (the Group icon after the selected Group is green, and the currently selected Group can be renamed here).The red box 1 is the brightness adjustment area. You can fine-tune the brightness of the currently selected group through the "+" and "-" buttons, or adjust the brightness of the currently selected group through the slider.Box 2 is the button to enter the group configuration page. Click the button to enter the group configuration page when the group is selected.

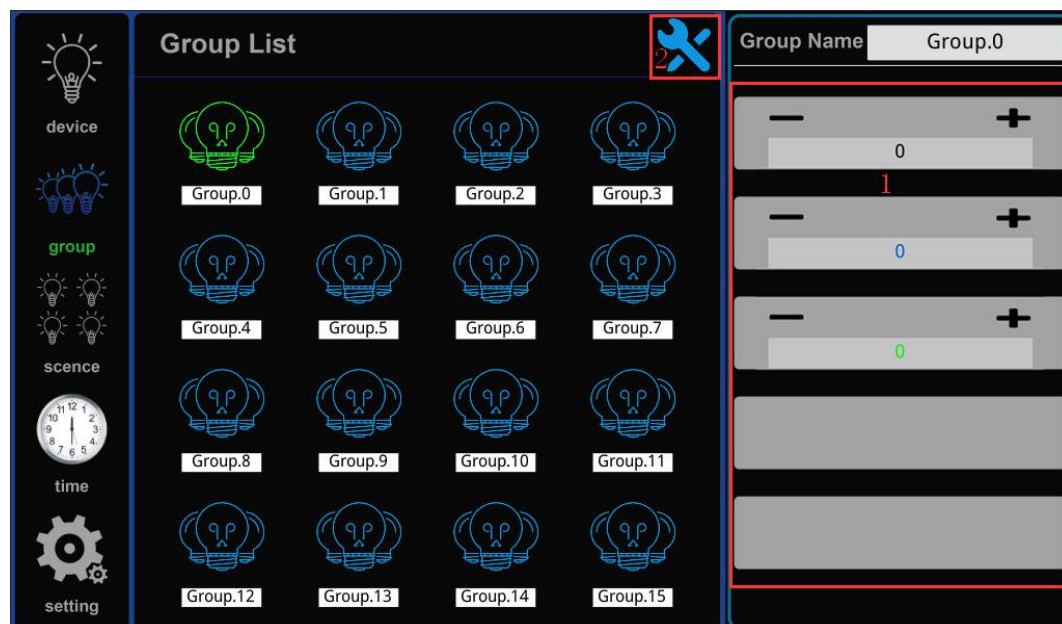


Figure 6

In the group configuration page, devices can be added to the currently selected group (as shown in

figure 7), indicating that devices have been added to the currently selected group and indicating that devices have not been added to the currently selected group. "Device Type" displays the Device Type for the currently selected group. The selection of device type is displayed in red box 1 on the page, and the device selection list in box 2 will pop up after clicking. The small blue arrow on this page can also turn the page. After the operation is completed, click the "group" button to return to the group page.

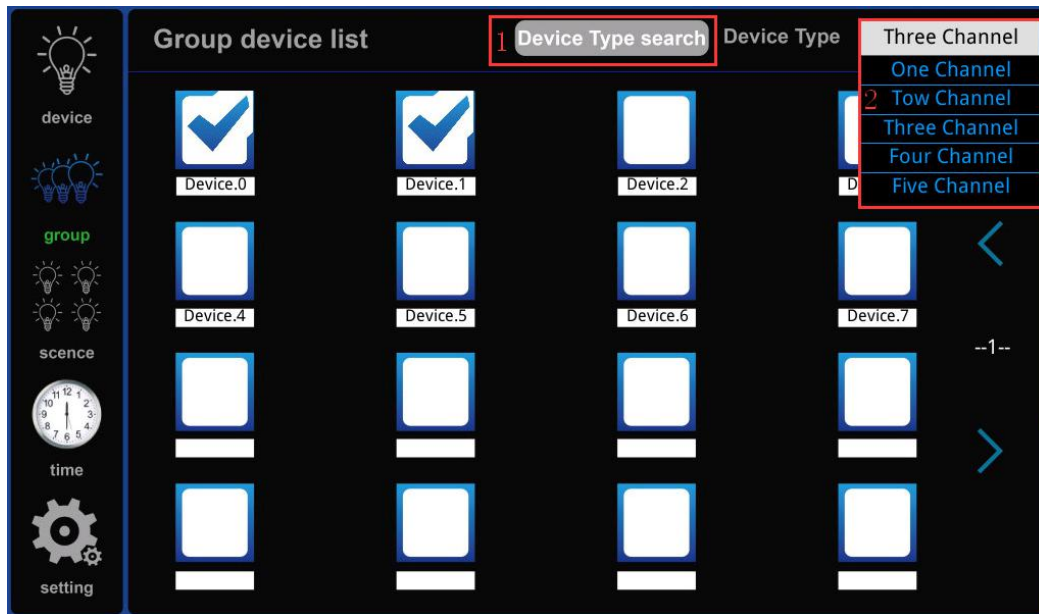


Figure 7

5.3.4 scene is the scene page. Click the "scene" button to enter the scene page, as shown in figure 8. Click the button in the box in figure 8 to enter the scene configuration page. "scene name" shows the name of the currently selected scene and renames the currently selected scene here. The unchecked one is blue.

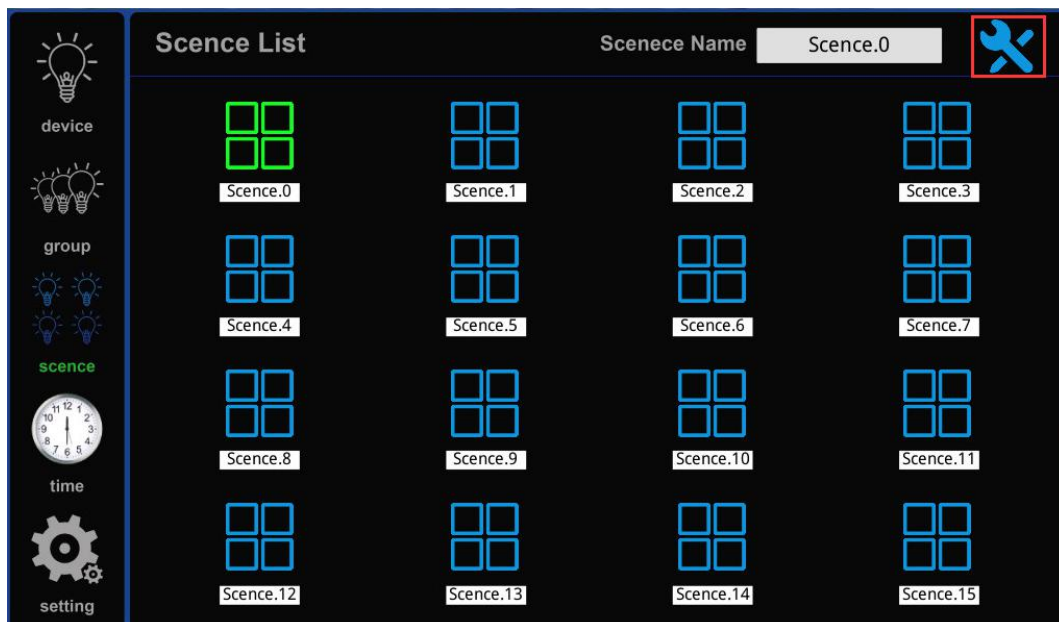


Figure 8

Click "ADD" and "Delete" in the scene configuration page to ADD or Delete the device in the currently selected scene (as shown in figure 9). If the device has been added to the current scene, the device icon will be shown in blue. If the current scene is not added, the device icon will appear as grey. Click the grey device icon and then click Add to Add the device into the current scene, and the device icon will change

from grey to blue. Similarly, click the blue device icon and then click Delete to Delete the device from the current scene.

Scene in the configuration page "Device name" shows the name of the currently selected Device in the current scenario (selected equipment icon shows for the green), figure 9 red box for the currently selected equipment brightness control area of the scene, but through the "+" and "-" two buttons within the currently selected scenes on equipment brightness fine-tuning, but can be by the slider to adjust the brightness of the currently selected group. The small blue arrow on this page can also turn the page. After the operation is completed, click the "group" button to return to the group page.

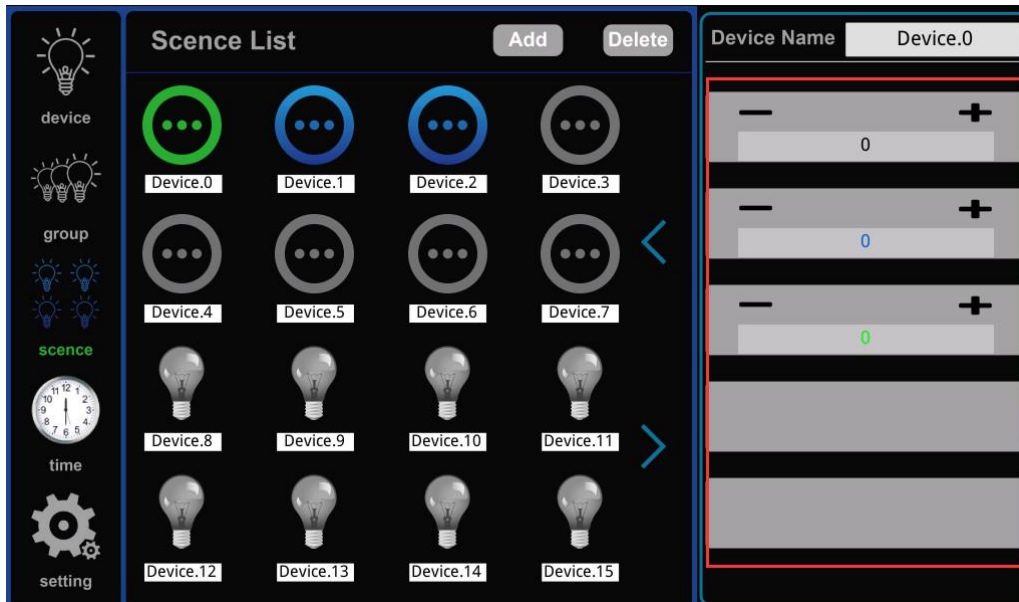


Figure 9

5.3.5 time is the timer page. Click "time" button to enter the timer page, as shown in figure 10. The option "Year", "Month" and "Day" on the timer page is to be filled in. If the date is filled in, the week option cannot be selected for the date in the same group of timers (the week option is in box 1). Similarly, if the week option is checked, the date in the same set of timers cannot be filled in with a year, month or day. In box 2 is the timer needs to trigger the time and the scene selection, "" button is timer switch, the button is blue when the timer has been opened (if the trigger date is year month day, the timer will be triggered once, if the week meets the adjustment, it can be triggered), gray when it is not opened. The "system time" at the bottom of the page shows the system time. The blue arrows on the left and right sides of the system time are the page turning keys of the timer page, which can be used to turn the timer page (there are 24 sets of timers in total). Meanwhile, long press here to modify the system time. If one of the timer options is not needed, you can clear the option. Select the option you want to clear and click the box below the option to pop up the page in figure 9 and select enter. "All On" and "All Off" are full On/full Off timer buttons.

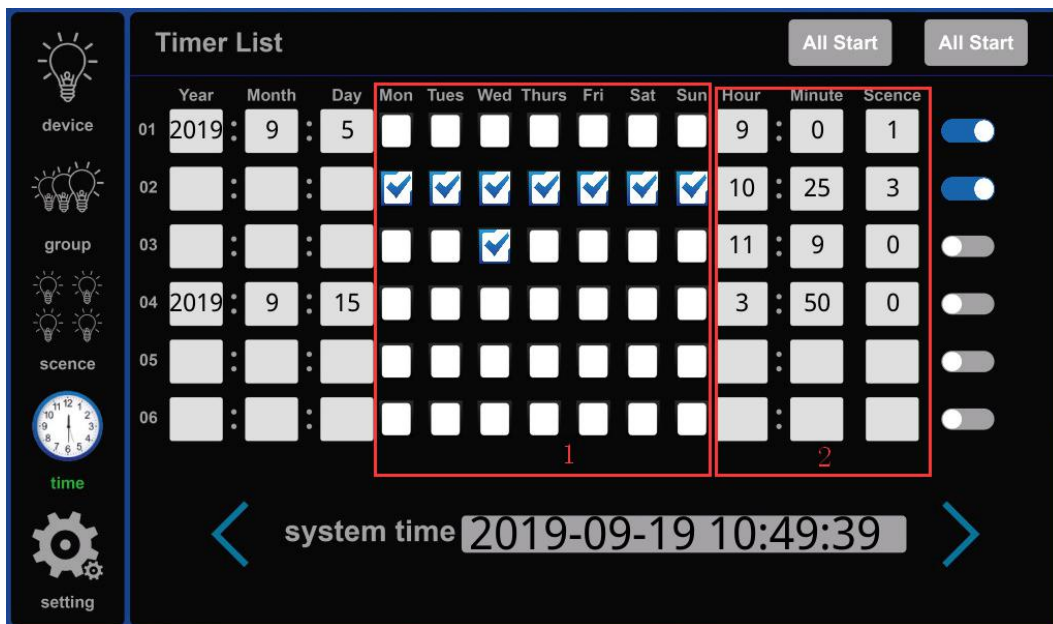


Figure 8

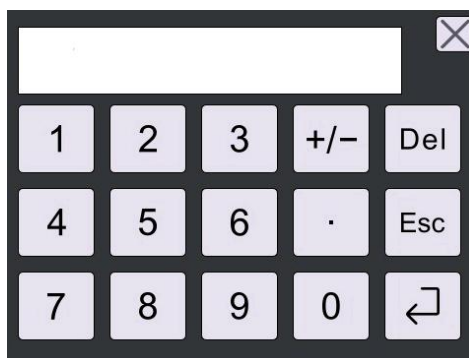


Figure 9

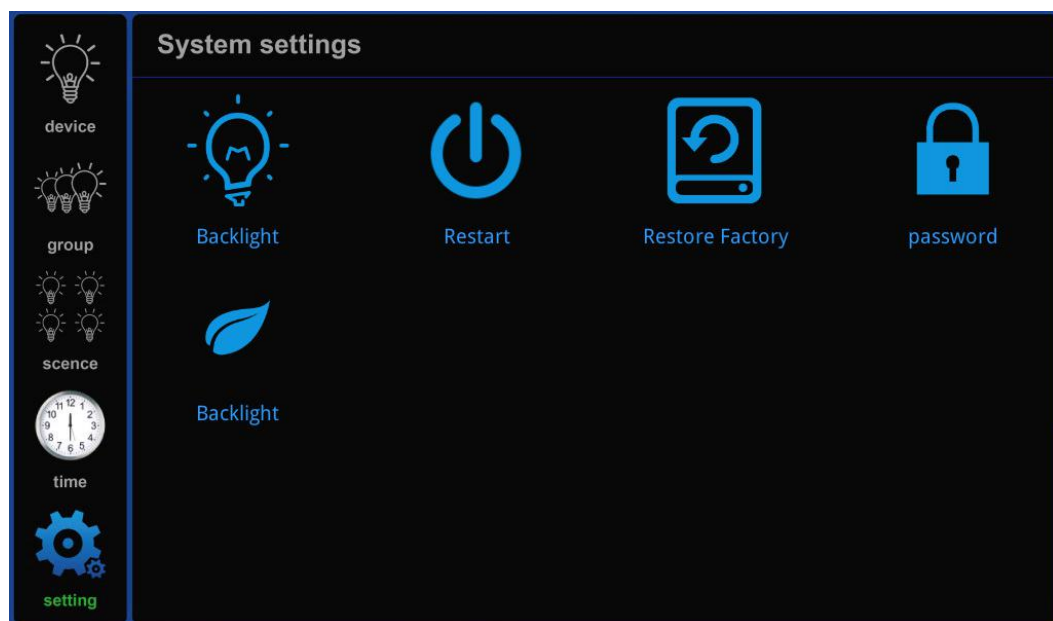


Figure 10

5.3.6 setting is the system setting page. Click "setting" button to enter the system setting page, as shown in figure 10.

The "Backlight" icon is the brightness adjustment button for the native user interface.

The "Restart" icon is the Restart button of the local system. Click it and it will Restart automatically without any prompt.

The "Restore Factory" icon is a button to Restore Factory Settings (Restore Factory state of native data), and a password is required after clicking. The password can be the default password (686890) or a user-defined password. If the password is entered incorrectly, the interface will not show any response after clicking the confirmation key. If the password is entered correctly, the interface will return to the setting interface after clicking the confirmation key.

"Password" icon is the password setting button, if the user needs to change the password can click this button to change.

The "Screen time" icon is the stop-screen time button, which can be dimmed to set the stop-screen time of the machine (in seconds).

6. Typical applications

