

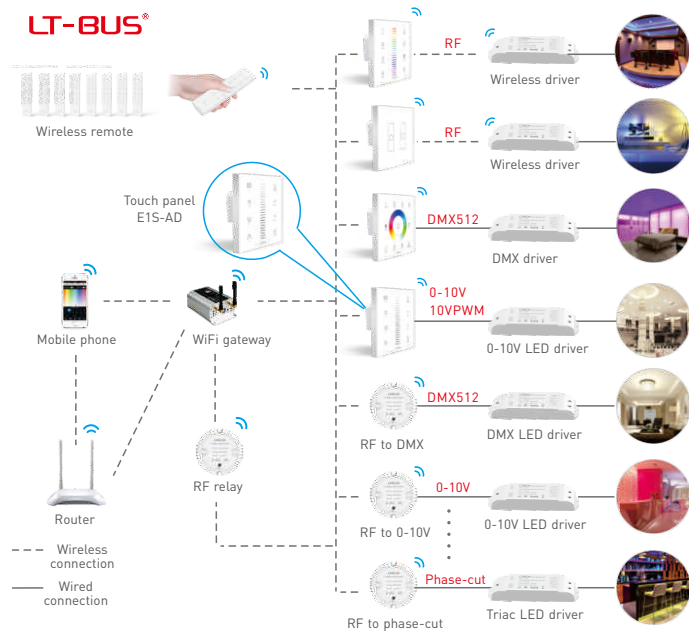
## E Series Touch Panel (dimming)



E1S-AD

Manual  
www.ltech-led.com

## System Diagram



## Product Features

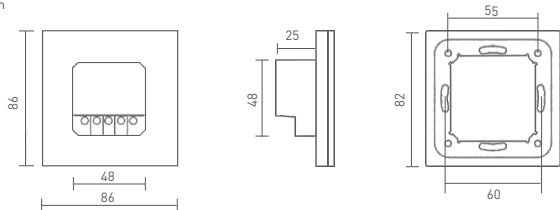
**LTECH**

- 3 in 1 function: RF wireless control and 0-10V, 10VPWM output control.
- Touch keys with chord and LED indicator.
- Adopts capacitive touch control technology on the panel, makes LED color selection more user-friendly.
- Touch panel can be controlled by remote directly or smart phone if add a gateway.

## Technical Specs

E1S-AD	Touch panel	
Input Voltage:	100~240Vac	Working Temp.: Ta: -20℃~55℃
Wireless Signal:	RF 2.4GHz	Dimensions: L86×W86×H36(mm)
Output Signal:	0-10V, 10V PWM	Package Size: L113×W112×H50(mm)
		Weight(G.W.): 225g

Unit: mm



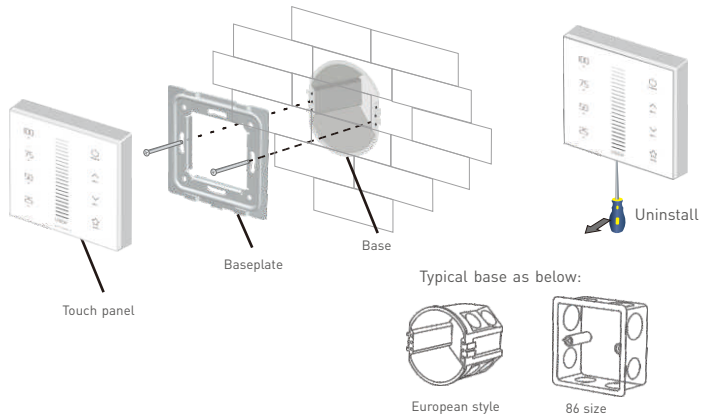
RoHS

warranty  
5 years

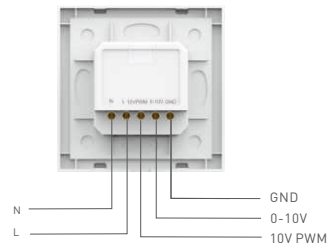


## Installation Instruction

**LTECH**



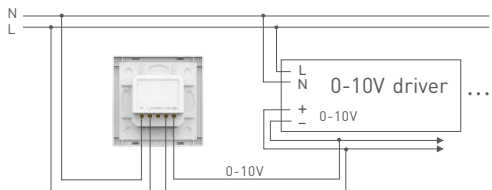
## Terminals



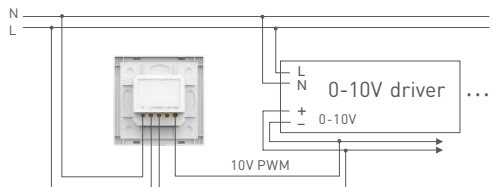
# Wiring Diagram



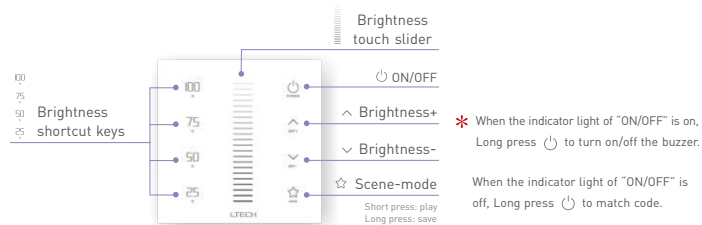
Connect with 0-10V driver



Connect with 0-10V driver (supporting 10V PWM)



# Key Functions

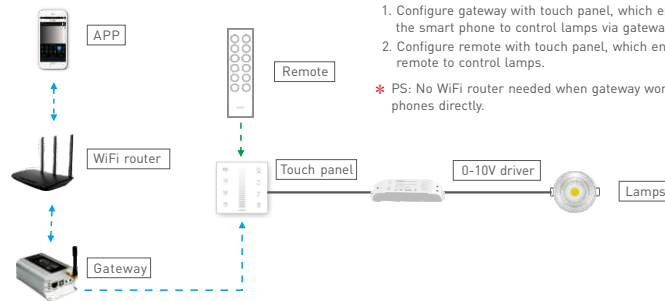


# Match Code Sequence

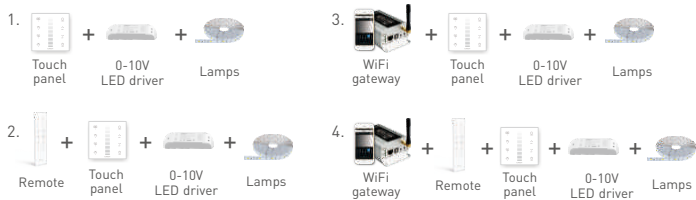
## Match code sequence:

1. Configure gateway with touch panel, which enables the smart phone to control lamps via gateway.
2. Configure remote with touch panel, which enables remote to control lamps.

\* PS: No WiFi router needed when gateway work with phones directly.

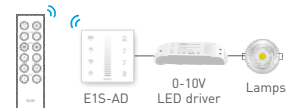


# Application Composition



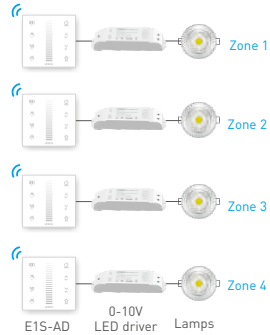
# RF Wireless Wiring

Single zone control



Single zone remote F1

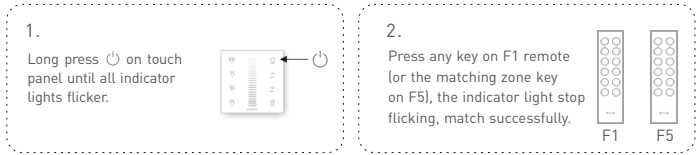
Multiple zones control



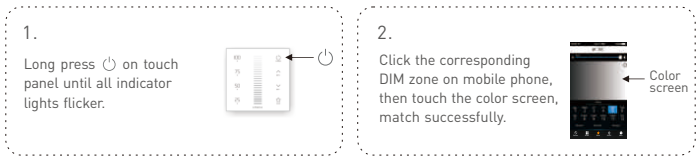
4 zones remote F5

\* Touch panels can be sync controlled by multi remotes, please refer to the manual of remote's usage.

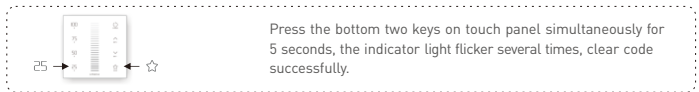
# Match Code between Touch Panel & Remote



# Match Code between Touch Panel & Gateway



# Clear Code



\* Please match/clear code when panel is off (indicator light of power key is on).