



## 1. Features

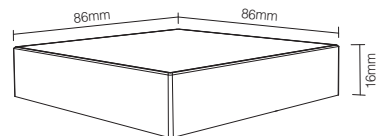
We adopt a high precision capacitive touch screen IC. Touch screen is very stable; 2.4GHz high RF wireless control with long distance controlling, low power consumption and high speed transmitting rate.

This product has T series and B series, and the difference is the method of power supplying. Both series have 4 kinds: T1/B1 4-zone dimmable panel remote; T2/B2 CCT 4-zone panel remote; T3/B3 4-zone RGB/RGBW panel remote; T4/B4 4-zone RGB+CCT panel remote. This product widely work on our smart LED Lighting, LED controller and smart panel controller, etc.

## 2. Parameters

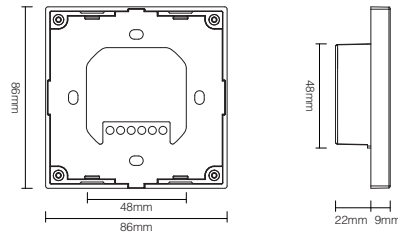
### B Series: Powered by 3V(2\*AAA Battery)

Working Voltage: 3V(2\*AAA Battery) Working Temp.: -10~40°C  
 Transmitting Power: 6dBm Control Distance: 30m  
 Standby Power Consumption: 20uA Size: 86\*86\*16mm  
 Transmission Frequency: 2.4GHz



### T Series: Powered by AC100~240V

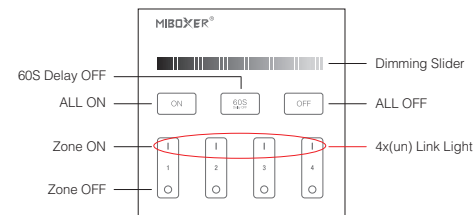
Working Voltage: AC100~240V Working Temp.: -10~40°C  
 Standby Power: 0.15W Control Distance: 30m  
 Transmitting Power: 6dBm Size: 86\*86\*31mm  
 Transmission Frequency: 2.4GHz



## 3. Function of keys

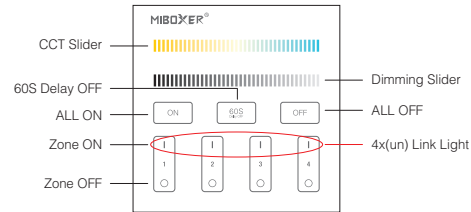
**Remark:** When touching the button, LED indicating lamp will flash once with different sound (Touch slider with no sound).

### B1 & T1 4-Zone Panel Remote ( Brightness )



- Touch dimming slider to change the brightness from 1~100%.
- Touch master ON, turn on all linked lights. Long press 5 seconds to turn ON the indicating sound.
- When the light is ON, press "60S Delay OFF", the light will be OFF Automatically after 60 seconds.
- Touch master OFF, turn off all linked lights. Long press 5 seconds to turn OFF the indicating sound.
- Touch Zone ON, turn on zone-linked lights.
- Touch Zone OFF, turn off zone-linked lights.

### B2 & T2 4-Zone Panel Remote ( Color Temp. )

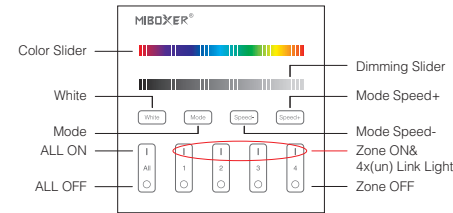


- Touch the slider to change color temperature.
- Touch dimming slider to change the brightness from 1~100%.
- Touch master ON, turn on all linked lights. Long press 5 seconds to turn ON the indicating sound.
- When the light is ON, press "60S Delay OFF", the light will be OFF Automatically after 60 seconds.
- Touch master OFF, turn off all linked lights. Long press 5 seconds to turn OFF the indicating sound.
- Touch Zone ON, turn on zone-linked lights.
- Touch Zone OFF, turn off zone-linked lights.

## Panel Remote

Model No.: T1 / T2 / T3 / T4 & B1 / B2 / B3 / B4

## B3 & T3 4-Zone Panel Remote ( RGBW )



Touch color slider, choose the color you want.

Touch dimming slider to change the brightness from 1~100%.

Touch white button to white light mode.

Switching modes.

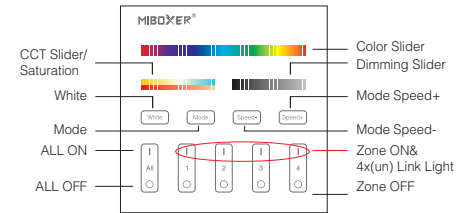
Slow the speed on present dynamic mode.

Accelerate the speed on present dynamic mode.

**ALL ON:** Touch to turn on all linked lights.  
Long press 5 seconds to turn ON the indicating sound.  
**Zone(1-4) ON:** Touch zone ON, turn on zone-linked lights.

**ALL OFF:** Touch to turn off all linked lights.  
Long press 5 seconds to turn OFF the indicating sound.  
**Zone(1-4) OFF:** Touch zone OFF, turn off zone-linked lights.

## B4 & T4 4-Zone Panel Remote ( RGB+CCT )



Touch color slider, choose the color you want.

Under white light mode, adjust color temperature;  
Under color light mode, change color saturation.

Touch dimming slider to change the brightness from 1~100%.

Touch white button to white light mode.

Switching modes.

Slow the speed on present dynamic mode.

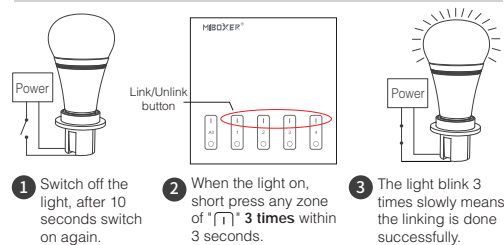
Accelerate the speed on present dynamic mode.

**ALL ON:** Touch to turn on all linked lights.  
Long press 5 seconds to turn ON the indicating sound.  
**Zone(1-4) ON:** Touch zone ON, turn on zone-linked lights.

**ALL OFF:** Touch to turn off all linked lights.  
Long press 5 seconds to turn OFF the indicating sound.  
**Zone(1-4) OFF:** Touch zone OFF, turn off zone-linked lights.

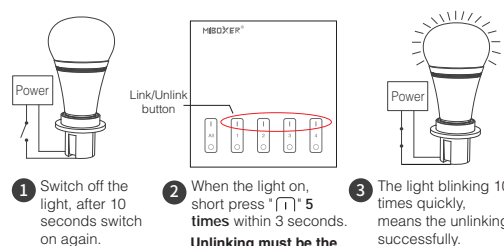
## 4. Link / Unlink (B1~B4,T1~T4)

### Linking Instructions



If the light not blink slowly, the linking failed, pls switch off the light again, and follow the above steps again.

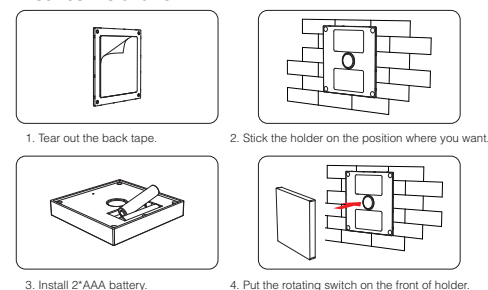
### Unlinking Instructions



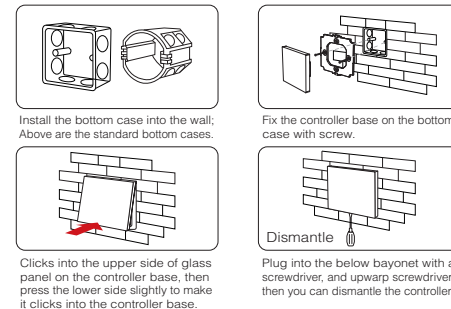
If the light not blink quickly, the unlink failed, pls switch off the light again, and follow the above steps to unlink again.

## 5. Installation

### B series Installation



### T series Installation/ Dismantlement



## 6. Attention

1. Please check the cable, and make the circuit is correct before power on.
2. When installation, pls handle with care to avoid the broken of the T series glass panel.
3. Please do not use lighting fixtures around the mental area and high magnetic field, otherwise, it will badly affect the control distance.



Made in China