



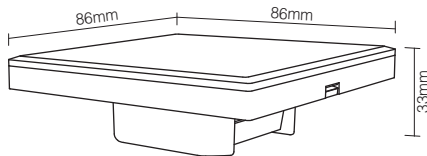
## DALI Dimming Panel

Model No.: DP1 / DP2

## 1. Features

Use DALI standard protocol IEC62386. DALI bus give power; easily setting address. Support single address mode, group address mode and broadcast mode; control the lamp ON/OFF and brightness.

## 2. Parameters



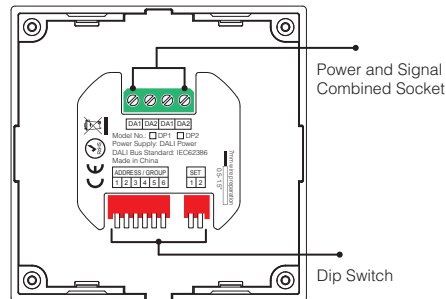
### DALI brightness dimming panel

Model No.: DP1  
Power Supply: DALI Power  
DALI Bus Standard: IEC62386  
Standby Current: 5mA  
Working Temperature: -20~60°C  
Product Weight: 138g

### DALI color temperature dimming panel

Model No.: DP2  
Power Supply: DALI Power  
DALI Bus Standard: IEC62386  
Standby Current: 5mA  
Working Temperature: -20~60°C  
Product Weight: 138g

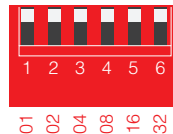
## 3. Connection Diagram



## 4. Dip Switch Operation

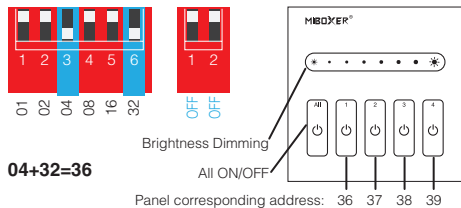
Via dip switch, you can set 64 single address(0~63), 16 group address (0~15) and broadcast mode.  
Address value= the sum of the DIP Switch value(to get the place value when in "ON" position, otherwise it will be 0).

Address / Group corresponding value diagram

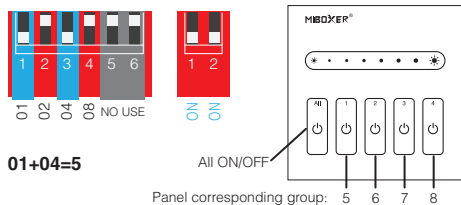


## DALI brightness dimming panel setting diagram.

i.e: Under single address mode, set the initial address to 36



i.e: Under group address mode, set the initial address to 5



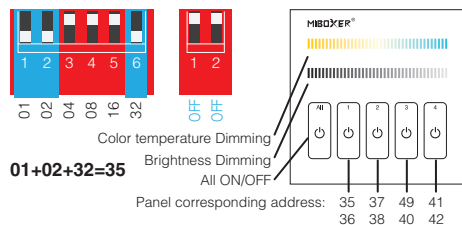
i.e: Set broadcast mode



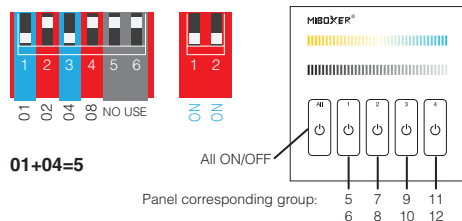
Note: it will be broadcast mode to press 1 or 2.

## DALI color temperature dimming panel setting diagram

i.e: Under single address mode, set the initial address to 35

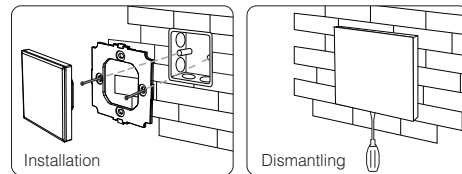


i.e: Under group address mode, set the initial address to 5



Note: There is no broadcast mode with DALI color temperature dimming panel.

## 5. Installation / Dismantling



## 6. Attention

When installation, pls handle with care to avoid the broken of the glass panel.