

# LTECH

## Bluetooth Smart Wireless Switch

(Programmable)



PS-BLE01



PS-BLE02



PS-BLE04

Manual

## Product Introduction

Xiaolei Bluetooth smart wireless switch is a key type switch that adopts Bluetooth 5.0 SIG Mesh technology. Powered by batteries, it's easy to install a wireless switch in the junction box or place it anywhere as needed, such as pasting on the wall, counter or table. It can work with a Bluetooth wireless driver to adjust the dim level or color temperature. Also, it works with gateway devices to achieve automatic control modes. Programmable settings make the life smarter and easier.

## Package Contents



Smart Wireless Switch×1



3M Sticker×1



Manual×1

 Bluetooth®   

# Technical Specs

Product Name: Bluetooth Smart Wireless Switch

Wireless Protocol Type: Bluetooth 5.0 SIG Mesh

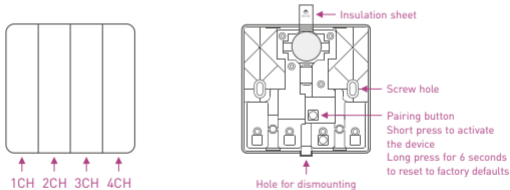
Working Voltage: 3Vdc (Button battery CR2032)

Working Temperature: -20°C-55°C

Package Size (LxWxH): 90x90x24(mm)

Weight(G.W.): 100g

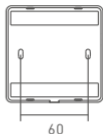
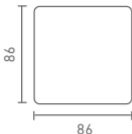
## Key Functions



- \* Short press: On/Off control
- \* Long press: Stepless dimming (With every other long press, the brightness level goes to the opposite direction)
- \* Please refer to P6 for more App configuration functions.

# Dimensions

Unit : mm



# Installation Instructions

## 1. Place freely

This product can be directly placed on a desktop.

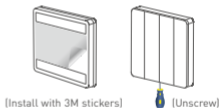
## 2. Install with 3M stickers

Adhere the panel to a wall directly with the 3M stickers in the package.

## 3. Install with screws

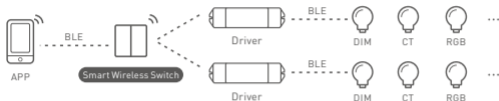
Unscrew the panel with a flat head screwdriver and screw the panel base plate to a wall or board, then fix the panel cover.

- \* Before you install the panel switch, please pull out the battery insulation sheet.
- \* Please do not place or paste the panel on the surfaces of metal doors, metal cabinets or other metal items for which may affect wireless communication distance.

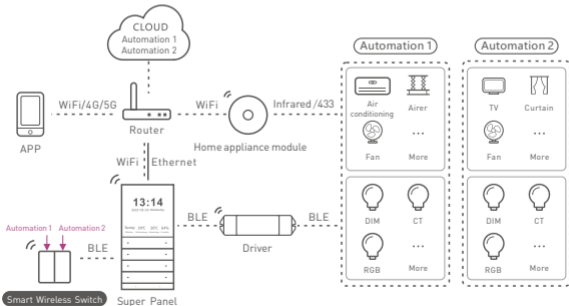


# Application Diagram

## Bluetooth Personal Area Network Application



## Cloud Automation Application



# App Operating Instructions

## 1. Register an account

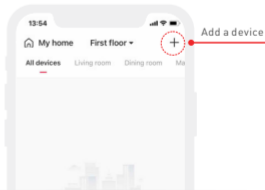
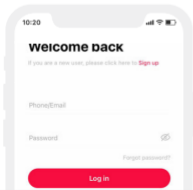
1.1 Scan the QR code below with you mobile phone and follow the prompts to complete the app installation.



Scan and download the App

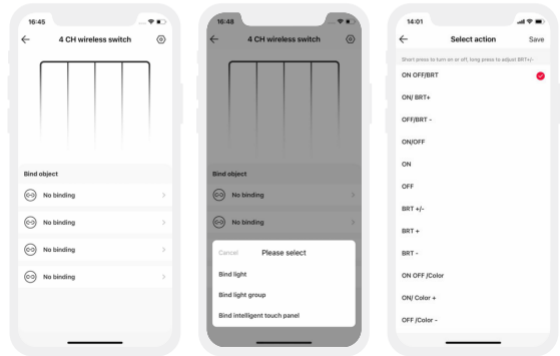
1.2 Open the App and log in or register an account.

1.3 Create a home if you are a new user. Click "+" icon in the upper right corner to access "Add Device" list.



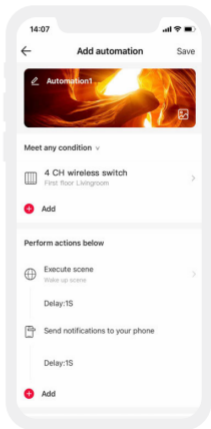
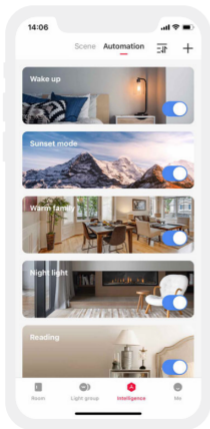
## 2. Pairing instructions and function settings

Access "Add Device" list and follow the prompts to add the driver firstly. Pick "Remote-Wireless Switch" from the list. Follow the prompts to pull out the insulation sheet first, and then short press the built-in pairing button to put the device into activated mode. The indicator light is flashing slowly at this moment, then click "Bluetooth Search" and follow the prompts to add the device. After pairing up, go to the control interface and select the buttons you are going to edit. The buttons allow you to bind lights, light groups and panels. Also, you are able to short press/long press them to set up the lighting effects.



### 3. Advanced function

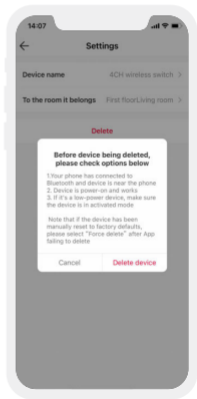
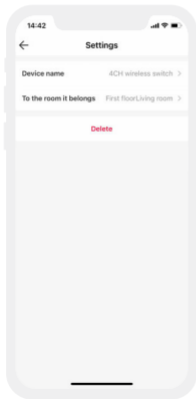
This wireless switch can be linked up with gateway devices (such as LTECH Super Panel) to achieve automation.





## 4. How to delete the device

Go to settings and click "Delete". Follow the prompts to connect your mobile phone to Bluetooth and make sure the device is near you phone. Remove the panel switch cover and short press the pairing button to put the device into activated mode. Click "Delete Device" and the device will exit the network successfully.



## Attentions

- Products shall be installed by qualified professionals.
  - LTECH products are non-waterproof (special models excepted). Please avoid the sun and rain. When installed outdoors, please ensure it is mounted in a water proof enclosure.
  - Good heat dissipation will extend the working life of products. Please ensure good ventilation.
  - Please check if the working voltage used complies with the parameter requirements of products.
  - The diameter of wire used must be able to load the light fixtures you connect and ensure the firm wiring.
  - Before you power on products, please make sure all the wiring is correct in case of incorrect connection that causes damage to light fixtures.
  - If a fault occurs, please do not attempt to fix products by yourself. If you have any question, please contact your suppliers.
- \* This manual is subject to changes without further notice. Product functions depend on the goods. Please feel free to contact our official distributors if you have any question.

## Warranty Agreement

Warranty periods from the date of delivery : 2 years.

Free repair or replacement services for quality problems are provided within warranty periods.

### Warranty exclusions below:

- Beyond warranty periods.
  - Any artificial damage caused by high voltage, overload, or improper operations.
  - Products with severe physical damage.
  - Damage caused by natural disasters and force majeure.
  - Warranty labels and barcodes have been damaged.
  - No any contract signed by LTECH.
1. Repair or replacement provided is the only remedy for customers. LTECH is not liable for any incidental or consequential damage unless it is within the law.
  2. LTECH has the right to amend or adjust the terms of this warranty, and release in written form shall prevail.