

Wall Mounted Knob Constant Current Dimmer

CE ROHS



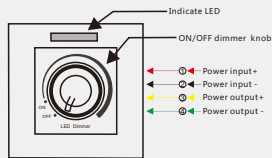
Summary

- PWM constant current dimmer, set three kinds of current(350/700/1050mA) output by dip switch.
- Mechanical knob switch and dimming, easy to use.
- Reliable and stable switch and dimming control without flicking.
- 256 level brightness adjustment.
- Can match remoter optional, realize remote dimming.
- Adopt 2.4GHz wireless technology, compatible with a variety of remoter, up to 10 remoter control.
- Work with power repeater to expand output unlimitedly.

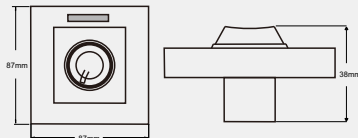
Technical Parameters

- Working voltage: 12-48VDC
- Output type: PWM constant current
- Output current: 1CH*350mA/1CH*700/1CH*1050mA
- Output power: 350mA: 12V<4.2W, 24V<8.4W, 36V<12.6W, 48V<16.8W
700mA: 12V<8.4W, 24V<16.8W, 36V<25.2W, 48V<33.6W
1050mA: 12V<12.6W, 24V<25.2W, 36V<37.8W, 48V<50.4W
- Grey levels: 4096
- Dimming range: 0-100%
- Remote distance: 30m
- Work temperature: -30°C~55°C
- Product size: L87×W87×H38mm
- Net weight: 80g

Interface Specification

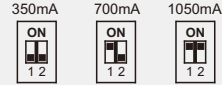


Dimension



Current select function

- 350mA : set dip switch 1 and 2 to down side(factory defaults).
- 700mA : set dip switch 1 to up side("ON"), set dip switch 2 to down side.
- 1050mA : set dip switch 1 and 2 to up side("ON").



Caution: before power on, you must confirm the current selection of dip switch, in order to protect lamps.

Knob function

1. ON/OFF

Anti-clockwise rotate knob to OFF location, turn off the light.

2. Knob dimming

Clockwise rotate to increase brightness.

Anti-clockwise rotate to decrease brightness.

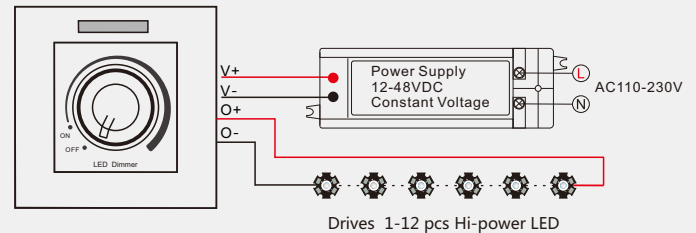
3. Remoter match (optional)

Match: Rotate knob to turn off light three times quickly, with in 5s, press any key of the remoter for match.

Multi-zone remoter must press zone key.

Delete: Rotate knob to turn off light six times quickly, delete all matched remoter.

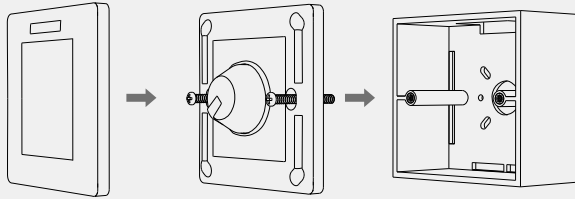
wiring diagram



LED power supply voltage and power select:

350mA LED lamp (1-12 in series), Input DC12-48V Power supply, can load 4.2~16.8W,
700mA LED lamp (1-12 in series), Input DC12-48V Power supply, can load 8.4~33.6W,
1050mA LED lamp (1-12 in series), Input DC12-48V Power supply, can load 12.6~50.4W,
The power supply power must larger than load power 20%.

Installation diagram



Warranty Agreement

1. 3-year warranty:

- The warranty is for free repair or replacement and covers manufacturing faults only.
- Do not include fees of on site maintenance and consumable parts.

2. Limited Warranty

- Artificial damage caused by improper use, such as use inappropriate power supply, improper accessories, improper installation, did not follow the instructions, error using or negligence.
- Any damages caused by force majeure, such as natural disaster, abnormal voltage.
- The normal use of products caused by aging, wear and tear, but it does not affect the normal use.

Malfunctions analysis & troubleshooting

Malfunctions	Causes	Troubleshooting
No light	1. No power. 2. Wrong connection or insecure.	1. Check the power. 2. Check the connection.
Uneven intensity between front and rear, with voltage drop	1. Output cable is too long. 2. Wire diameter is too small. 3. Overload beyond power supply capability. 4. Overload beyond controller capability.	1. Reduce cable or loop supply. 2. Change wider wire. 3. Replace higher power supply. 4. Add power repeater.
No response from the remoter	1. The battery has no power. 2. Beyond controllable distance. 3. The controller did not match the remoter.	1. Replace battery. 2. Reduce remote distance. 3. Re-match the remoter.

Safety & Warnings

1. The product shall be installed and serviced by a qualified person.
2. This product is non-waterproof. Please avoid the sun and rain.
3. Good heat dissipation will prolong the working life of the controller. ,please ensure good ventilation.
4. Please check if the output voltage of any power supplies used comply with the working voltage of the product.
5. Ensure all wire connections and polarities are correct and secure before applying power to avoid any damages to the LED lights.
6. If a fault occurs please return the product to your supplier. Do not attempt to fix this product by yourself.