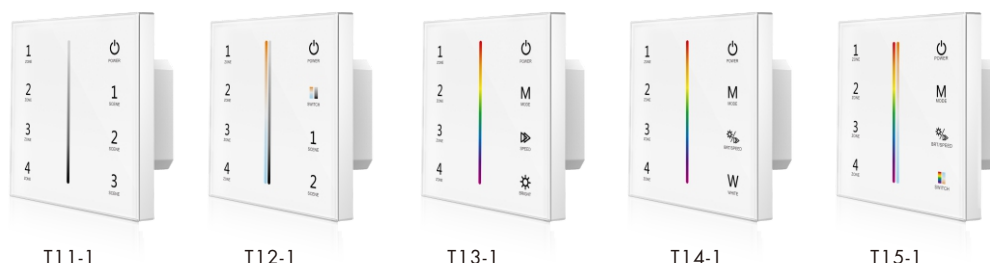


# Wall Mounted Touch Panel



Model No.: T11-1, T12-1, T13-1, T14-1, T15-1

4 Zone/1-5 color/Glass touch panel/Color slide/AC input/DMX 512 and RF 2.4G signal output



CE RoHS LVD RED

## Features

- Touch panel 4 zone 1-5 color DMX512 master, can also be used as 4 zone 1-5 color RF remote.
- DMX signal output, comply to standard DMX512 protocol, compatible with DMX decoder from any supplier.
- When used as RF remote, each zone can remote control multiple receivers, including Skydance's 2.4G LED controller, dimming driver or smart lamp.
- Ultra sensitive high strength glass touch panel with touch color slide in the middle and backlighting.
- Smooth and accurate color adjustment by touching the color slide.
- Touch keys with chord tones and LED indicator.

## Technical Parameters

Model No.	T11-1	T12-1	T13-1	T14-1	T15-1
Light type	Single color	Dual color	RGB	RGBW	RGB+CCT
Output DMX channel number	4	8	12	16	20

Input and Output	
Input voltage	85-265VAC
Input current	Max 0.1A
Output signal	DMX512, RF 2.4GHz

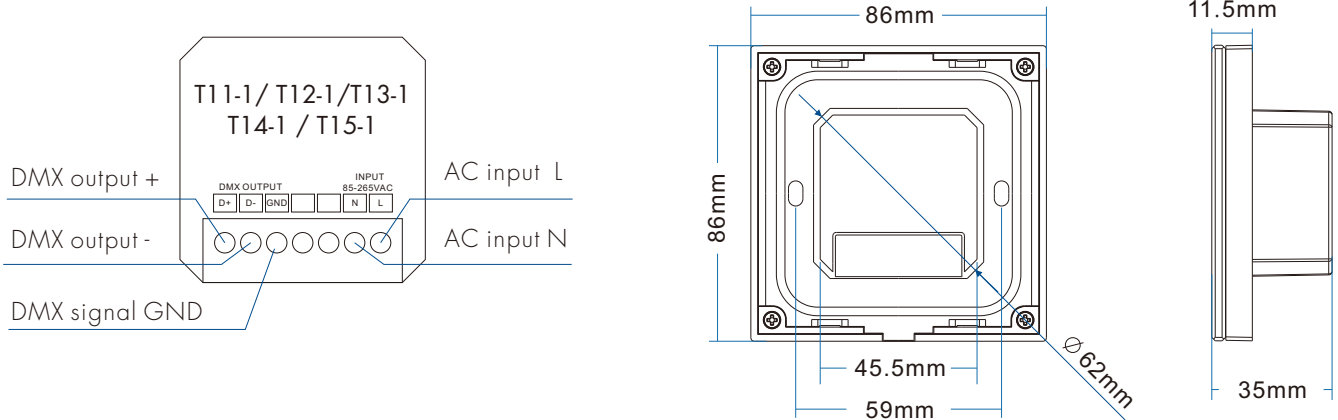
Safety and EMC	
EMC standard (EMC)	EN301 489,EN 62479
Safety standard(LVD)	EN60950
Radio Equipment(RED)	EN300 328
Certification	CE,EMC,LVD,RED

Warranty	
Warranty	5 years

Dimming data	
Input signal	Touch key + RF 2.4GHz
RF Control distance	30m
Dimming level	256 levels
Dimming range	0-100%

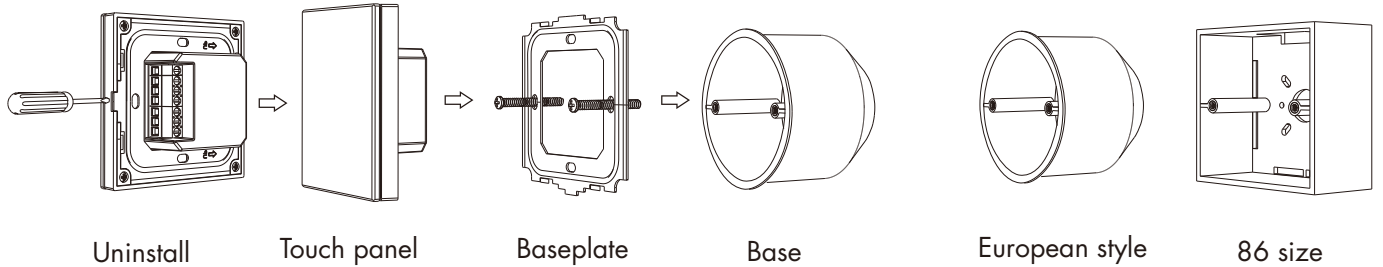
Environment	
Operation temperature	Ta: -30°C ~ +55°C
Case temperature (Max.)	Tc: +85°C
IP rating	IP20

## Mechanical Structures and Installations



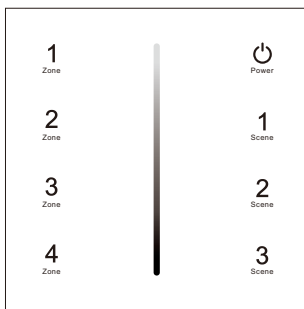
Installation diagram:

Typical base as below:



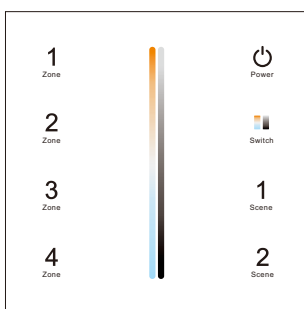
## Key function

### T11-1 Single color panel



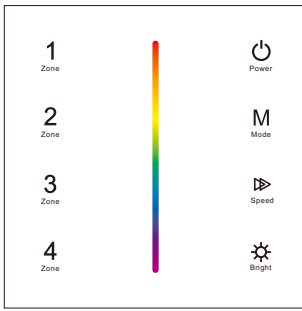
- Turn on/off all zone light.
- Brightness slide.
- Short press recall scene. Long press 2s to save the current state into 1/2/3.
- Short press turn on zone light and select zone simultaneously, long press 2s turn off zone light. 4 zone control separately or synchronously, each zone could control multiple receivers.

### T12-1 Dual color panel



- Turn on/off all zone light.
- Color temperature / Brightness slide.
- Switch between color temperature / brightness slide
- Short press recall scene. Long press 2s to save the current state into 1/2.
- Short press turn on zone light and select zone simultaneously, long press 2s turn off zone light. 4 zone control separately or synchronously, each zone could control multiple receivers.

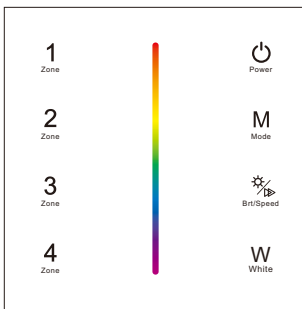
### T13-1 RGB panel



- Turn on/off all zone light.
- Color slide.
- Short press play 10 built-in mode, long press run mode-cycle.
- Adjust dynamic mode speed or RGB color saturation, 10 levels.
- Adjust brightness, 10 levels.

1 2 3 4  
Zone Zone Zone Zone  
Short press turn on zone light and select zone simultaneously, long press 2s turn off zone light. 4 zone control separately or synchronously, each zone could control multiple receivers.

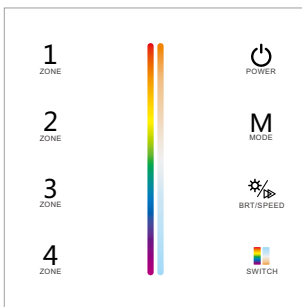
### T14-1 RGBW panel



- Turn on/off all zone light.
- Color slide.
- Short press play 10 built-in mode, long press run mode-cycle.
- Adjust dynamic mode speed or static color brightness, 10 levels.
- Short press turn on/off W channel, long press adjust W channel brightness.

1 2 3 4  
Zone Zone Zone Zone  
Short press turn on zone light and select zone simultaneously, long press 2s turn off zone light. 4 zone control separately or synchronously, each zone could control multiple receivers.

### T15-1 RGB+CCT panel



- Turn on/off all zone light.
- RGB color / Color temperature slide.
- Switch between RGB color / Color temperature slide.
- Short press play 10 built-in mode, long press run mode-cycle.
- Adjust dynamic mode speed or static color brightness, 10 levels.

1 2 3 4  
Zone Zone Zone Zone  
Short press turn on zone light and select zone simultaneously, long press 2s turn off zone light. 4 zone control separately or synchronously, each zone could control multiple receivers.

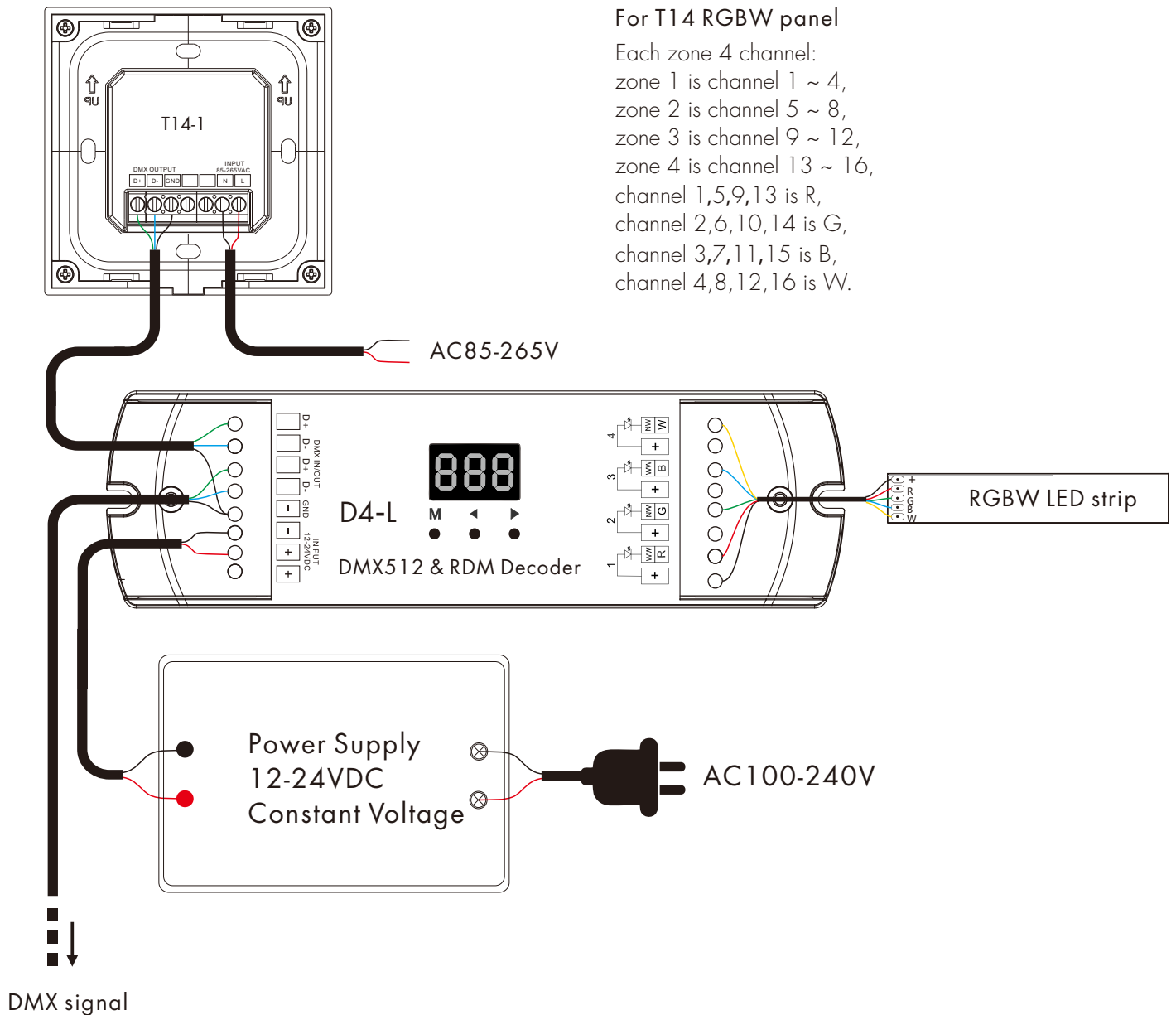
**Note:** After touch power key to turn off light, long press power key for 5 seconds will turn on or turn off tone.

## Touch Panel work as DMX512 Master

After connect with DMX decoders, please set the DMX decoders address as below:

Model No.	T11-1	T12-1	T13-1	T14-1	T15-1
Zone 1 DMX decoder's address	1	1,2	1,2,3	1,2,3,4	1,2,3,4,5
Zone 2 DMX decoder's address	2	3,4	4,5,6	5,6,7,8	6,7,8,9,10
Zone 3 DMX decoder's address	3	5,6	7,8,9	9,10,11,12	11,12,13,14,15
Zone 4 DMX decoder's address	4	7,8	10,11,12	13,14,15,16	16,17,18,19,20

## Wiring Diagram for touch panel work as DMX512 master



## Touch Panel work as RF remote (two match ways)

End user can choose the suitable match/delete ways. Two options are offered for selection:

### Use the controller's Match key

Match:

Short press match key, immediately press Zone key of the touch panel.

Delete:

Press and hold match key for 5s to delete all match, The light blinks 5 times means all matched remotes were deleted.

### Use Power Restart

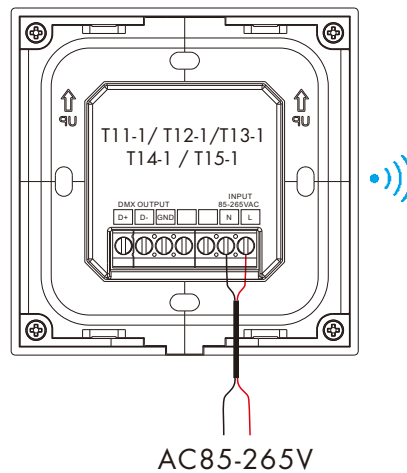
Match:

Switch off the power of the receiver, then switch on power again, immediately short press Zone key 3 times on the touch panel. The light blinks 3 times means match is successful.

Delete:

Switch off the power of the receiver, then switch on power again, immediately short press Zone key 5 times on the touch panel. The light blinks 5 times means all matched remotes were deleted.

## Wiring Diagram for touch panel work as RF remote



## Malfunctions analysis & troubleshooting

Malfunctions	Causes	Troubleshooting
No light	<ol style="list-style-type: none"> <li>1. No power.</li> <li>2. Wrong connection or insecure.</li> </ol>	<ol style="list-style-type: none"> <li>1. Check the power.</li> <li>2. Check the connection.</li> </ol>
Wrong color	<ol style="list-style-type: none"> <li>1. DMX decoder first address error.</li> <li>2. Wrong connection of output wires.</li> </ol>	<ol style="list-style-type: none"> <li>1. Check the DMX first address.</li> <li>2. Reconnect output wires.</li> </ol>