

Wall Mounted Touch Panel



Model No.: T15

4 Zone/1-5 color in one/Glass touch panel/Color wheel/AC input/DMX 512 and RF 2.4G signal output



CE RoHS  LVD RED

Features

- Touch panel 4 zone 1-5 color DMX512 master, can also be used as 4 zone 1-5 color RF remote.
- Each zone can be set as single color, dual color(WW/CW), RGB, RGBW or RGB+CCT light type.
- DMX signal output, comply to standard DMX512 protocol, compatible with DMX decoder from any supplier.
- When used as RF remote, each zone can remote control multiple Skydance's 2.4G LED controllers.
- Ultra sensitive high strength glass touch panel with touch color wheel in the middle and backlighting.
- Smooth and accurate color adjustment by touching the color wheel.
- Touch keys with chord tones and LED indicator.

Technical Parameters

Input and Output	
Input voltage	85-265VAC
Input current	Max 0.1A
Output signal	DMX512, RF 2.4GHz

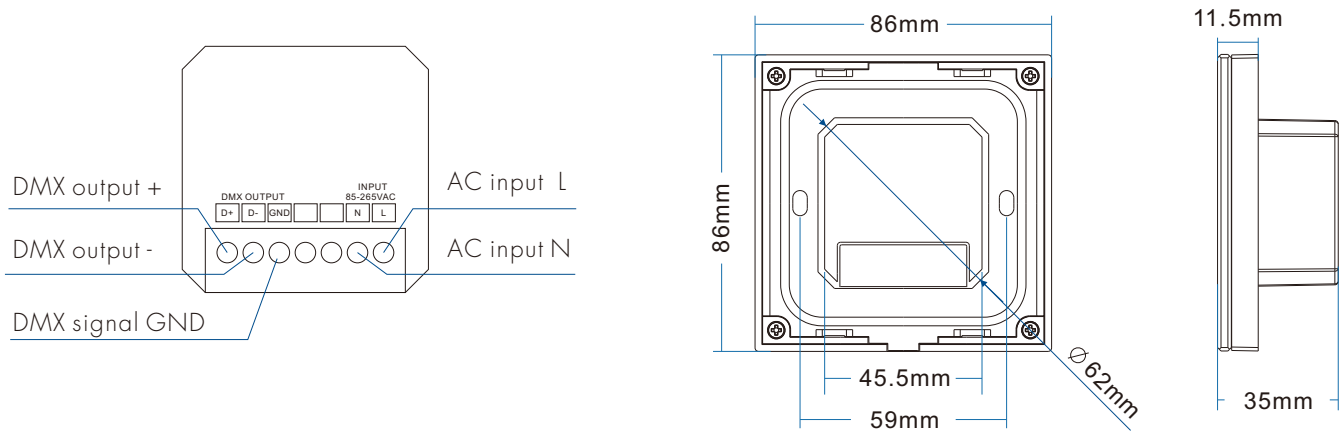
Safety and EMC	
EMC standard (EMC)	EN301 489,EN 62479
Safety standard(LVD)	EN60950
Radio Equipment(RED)	EN300 328
Certification	CE,EMC,LVD,RED

Warranty	
Warranty	5 years

Dimming data	
Input signal	Touch key + RF 2.4GHz
RF Control distance	30m
Dimming level	256 levels
Dimming range	0-100%

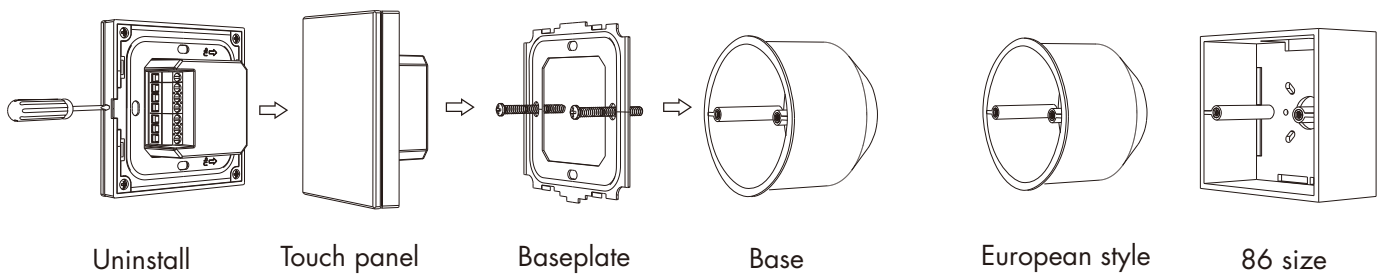
Environment	
Operation temperature	Ta: -30°C ~ +55°C
Case temperature (Max.)	Tc: +85°C
IP rating	IP20

Mechanical Structures and Installations

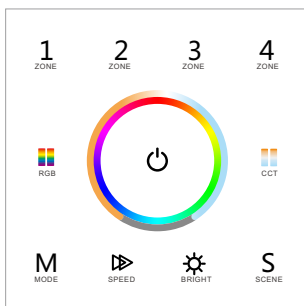


Installation diagram:

Typical base as below:



Key function



Zone light type setting

Each zone can match single color, dual color(WW/CW), RGB, RGBW, or RGB+CCT(WW/CW) controller or lamp.

Touch power key to turn on light, turn off light, then immediately long press power key for 2 seconds, enter zone light setting, Zone 1 indicator is on and Zone 1's light type is displayed:

- indicator is on: Zone1 is single color type.
- indicator is on: Zone1 is dual color type.
- indicator is on: Zone1 is RGB color type.
- indicator is on: Zone1 is RGBW type.
- indicator is on: Zone1 is RGB+CCT type.


If you want to change zone 1 light type, please long press above five key for 2 seconds,

For example, long press will set Zone 1 as RGB type.


If you want to change zone 2/3/4 light type, short press 2/3/4 zone key firstly, then repeat above step.


short press power key or timeout 8s, quit zone light type setting.


 — Turn on/off all zone light.


 — RGB color / Color temperature.
Press RGB or CCT key to switch between RGB wheel and CCT wheel.


 — RGB color, 24 levels.

 — For dual color or RGB+CCT(WW/CW), adjust color temperature by WW/CW channel, short press 11 levels, long press 2s get max or min color temperature.
For RGB, adjust color temperature by mix R/G/B channel, 11 levels.
For RGBW, adjust color temperature by adjust W channel brightness, 11 levels.
long press 2s get 100% or 0% White channel brightness.

 — Short press play 10 built-in mode, long press 2s run mode-cycle.

 — For dynamic RGB mode, adjust speed, short press 10 levels, long press 2s get the default speed.
For static RGB color, adjust saturation, namely change current static RGB color to mixed white slowly, short press 11 levels, long press 1-6s for continuous 256 levels adjustment.

 — Adjust brightness, short press 10 levels, long press 1-6s for continuous 256 levels adjustment.

 — Short press replay scene. Long press 2s to save the current color into the scene.
4 zone recall or save synchronously.

1 2 3 4
ZONE ZONE ZONE ZONE

Short press turn on zone light and select zone simultaneously, long press 2s turn off zone light.

4 zone control separately or synchronously, each zone could control multiple receivers.

Only multiple zone have same light type can select synchronously.

Note:

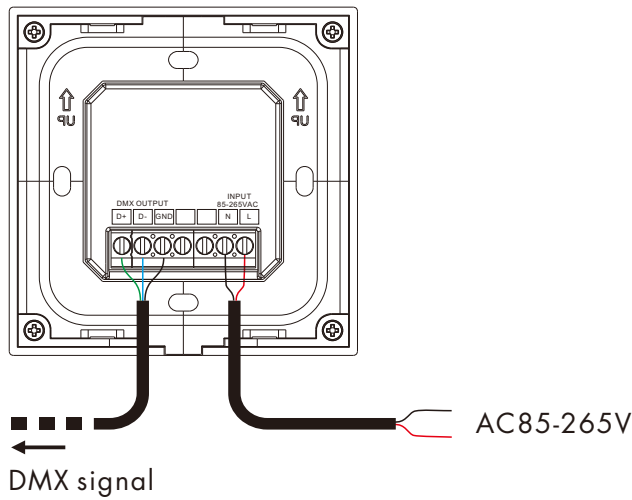
- For single color, touch RGB/CCT wheel only change brightness, RGB, MODE, SPEED key is invalid.
- For dual color, touch RGB/CCT wheel only change color temperature, RGB, MODE, SPEED key is invalid.
- For RGB, when touch CCT wheel, adjust color temperature by mix R/G/B channel.
- For RGBW, when touch CCT wheel, adjust W channel brightness.
- After touch power key to turn off light, wait more than 3 seconds, long press power key for 5 seconds will turn on or turn off tone.

Touch Panel work as DMX512 Master

After connect with DMX decoders, please set the DMX decoders address as below:

Light Type	Light color channel					Zone 1 DMX address	Zone 2 DMX address	Zone 3 DMX address	Zone 4 DMX address
Single color	W	W	W	W	W	1-5	6-10	11 -15	16 - 20
Dual color	WW	CW	WW	CW	0	1-5	6-10	11 -15	16 - 20
RGB	R	G	B	0	0	1-5	6-10	11 -15	16 - 20
RGBW	R	G	B	W	W	1-5	6-10	11 -15	16 - 20
RGB+CCT	R	G	B	WW	CW	1-5	6-10	11 -15	16 - 20

Wiring Diagram for touch panel work as DMX512 master



Touch Panel work as RF remote (two match ways)

End user can choose the suitable match/delete ways. Two options are offered for selection:

Use the controller's Match key

Match:

Short press match key, immediately press Zone key of the touch panel.

Delete:

Press and hold match key for 5s to delete all match, The light blinks 5 times means all matched remotes were deleted.

Use Power Restart

Match:

Switch off the power of the receiver, then switch on power again, immediately short press Zone key 3 times on the touch panel. The light blinks 3 times means match is successful.

Delete:

Switch off the power of the receiver, then switch on power again, immediately short press Zone key 5 times on the touch panel. The light blinks 5 times means all matched remotes were deleted.

Wiring Diagram for touch panel work as RF remote

