

User Guide

Touch Panel 0-10V LED Dimmer

0-10V dimmer T18 / T18-1 is a full touch LED controller which outputs one or four channel 0-10V signal, offers both switch on/off and dimming functions. Adopting high strength ultra sensitive touch glass panel, fast and accurate brightness adjustment with unique design touch slide. 0.1% to 100% smooth dimming range without any flickering can be very comfortable for human eyes. Back lighting function enables the touch panel to be found even in the dark. The touch dimmer is powered by AC input and can be compatible with existing standard size 86*86mm wall boxes.

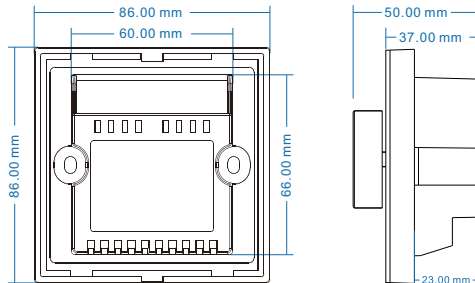
Feature

- Touch panel 0-10V dimmer, output 1 or 4 channel 0-10V signal.
- Output connect with 0/1-10V dimmable driver.
- High sensitive & high stable glass touch panel, fast & precise control.
- Reliable and stable switch and dimming control without flickering.
- 256 levels brightness adjustment.
- Match with a variety of single color RF remote optional.
- Adopt 2.4GHz wireless technology, remote distance up to 30m.
- Touch keys with chord tones and LED indicator.

Technical parameter

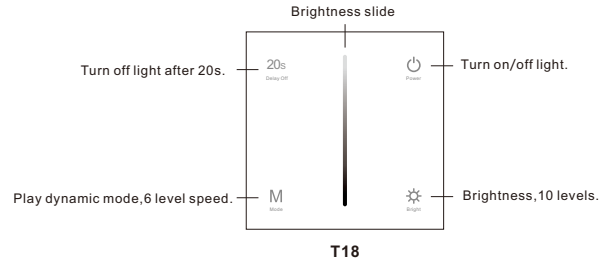
Model	Input voltage	Output signal	Output current	Light type	Size(mm)
T18	85-265VAC	0-10V	1CH,20mA/CH	Single color	86x86x37
T18-1	85-265VAC	4 x 0-10V	4CH,10mA/CH	4 zone single color	86x86x37

Dimension

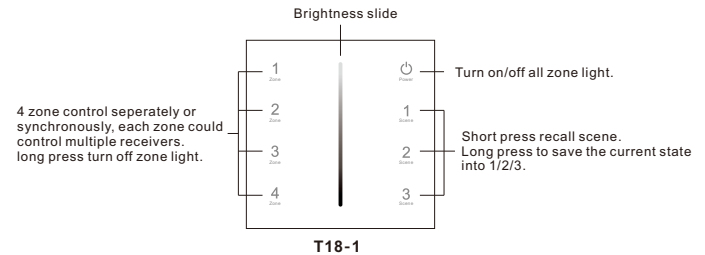


Key function

• One zone single color panel



• Four zone single color panel



Note: After touch power key to turn off light, long press power key for 5 seconds will turn on or turn off tone.

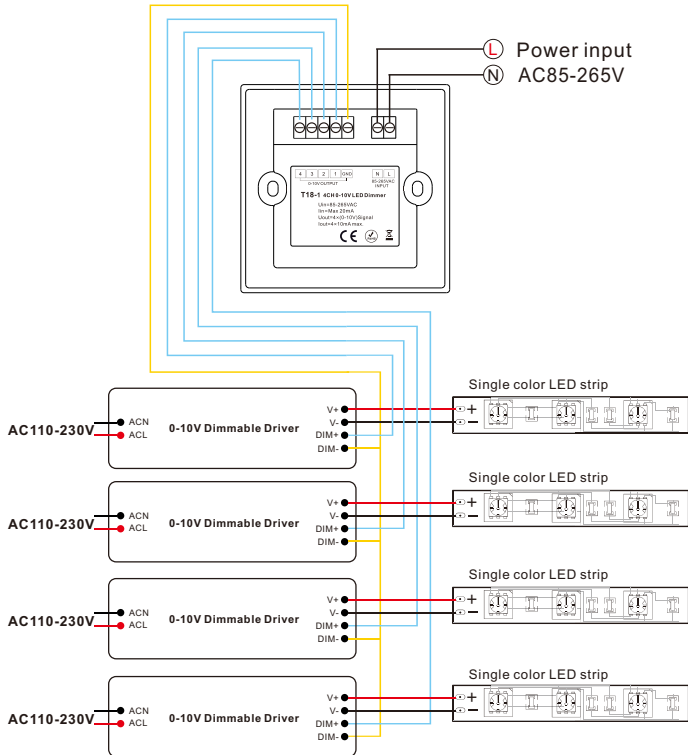
Match guide

Panel controller can match with RF remote by using power-up optionally.

1. Match: Switch off the power, then switch on power again, short press on/off key or zone key 3 times on the RF remote quickly within 5s after power on, the link is done once the light blinks 3 times.
2. Delete: Switch off the power, then switch on power again, short press on/off key or zone key 5 times on the RF remote quickly within 5s after power on, the unlink is done once the light blinks 5 times.
3. Multiple zone remote only use zone key to match each zone receiver.

Wiring diagram

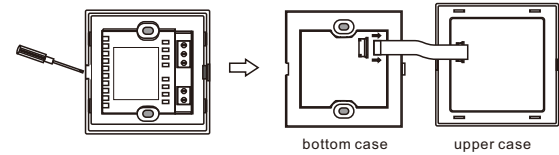
T18-1 connect with 4 dimmable driver



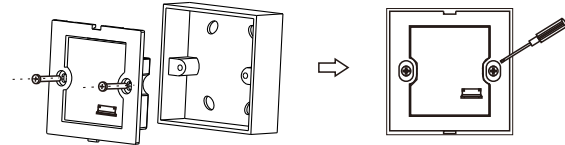
T18 have same wiring diagram, just only connect with one 0-10V dimming driver.

Installation diagram for T18 / T18-1

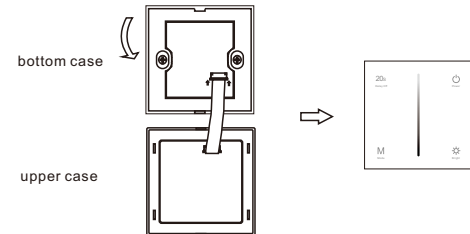
1. Flip panel, inserted into the card edge aperture with a small screwdriver, gently pry and open the panel. pull out FPC lock catch, then remove FPC line.



2. After connect wires, put bottom case into 86 bottom box, put in the screw and tighten.



3. Connect FPC line. then from top to bottom, moderately cover upper case, complete installation.



NOTES:

- In order to ensure safety, turn off the power first before wiring, ensure correct wiring to avoid short circuit.
- In the process of installation, do not damage or twist FPC line, in order to avoid damage.

Malfunctions analysis & troubleshooting

Malfunctions	Causes	Troubleshooting
No light	1. No power. 2. Wrong connection or insecure.	1. Check the power. 2. Check the connection.
No response from the remote	1. The battery has no power. 2. Beyond controllable distance. 3. The controller did not match the remote.	1. Replace battery. 2. Reduce remote distance. 3. Re-match the remote.