

User Guide

Wall Mounted Touch Panel DIM/CCT/RGB/RGBW LED Constant Voltage Controller & RF 2.4G Remote

Summary

- Touch panel single color, dual color, RGB or RGBW PWM constant voltage controller, can also be used as RF remote.
 - Ultra sensitive high strength glass touch panel with touch color slide in the middle and backlighting.
 - Smooth and accurate color adjustment by touching the color slide.
 - Adopt 2.4GHz wireless technology, remote distance up to 30m.
- when used as controller, can accept up to 10 remote control.
- when used as remote, can remote control multiple controller.

Technical parameter

Model	Input voltage	Output signal	Output current	Output power	Light type	Size(mm)
T1-1	12-24VDC	PWM + RF2.4G	4CH,3A/CH	144-288W	Single color	86x86x37
T2-1	12-24VDC	PWM + RF2.4G	4CH,3A/CH	144-288W	Dual color	86x86x37
T3-1	12-24VDC	PWM + RF2.4G	3CH,4A/CH	144-288W	RGB	86x86x37
T4-1	12-24VDC	PWM + RF2.4G	4CH,3A/CH	144-288W	RGBW	86x86x37

Match guide

Panel controller work as PWM controller (match with RF remote optional)

1. Match: Turn on light, turn off, immediately press on/off key for 5s, within 5s, press on/off key or zone key of the RF remote.
2. Delete: Turn on light, turn off, immediately press on/off key for 10s, delete all matched RF remote.
3. Multiple zone RF remote only use zone key to match each zone receiver.

Panel controller work as RF remote

Match with controller(with match key)

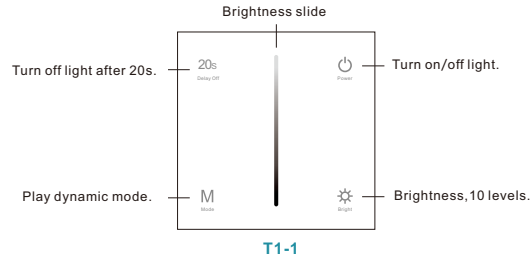
1. Match: Short press match key, within 5s, press on/off key of the panel remote.
2. Delete: Long press match key for 5s, delete all matched remote.

Match with controller(without match key), dimming driver or smart lamp

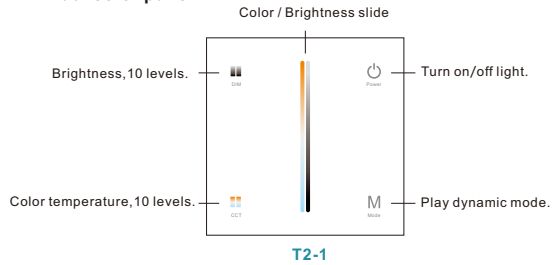
1. Match: Switch off the power, then switch on power again, short press on/off key 3 times on the panel remote quickly within 5s after power on, the link is done once the light blinks 3 times.
2. Delete: Switch off the power, then switch on power again, short press on/off key 5 times on the panel remote quickly within 5s after power on, the unlink is done once the light blinks 5 times.

Key function

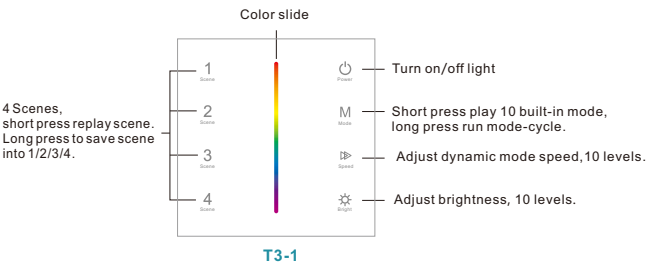
• Single color panel



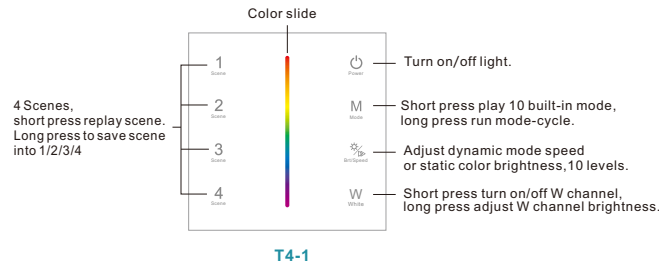
• Dual color panel



• RGB panel

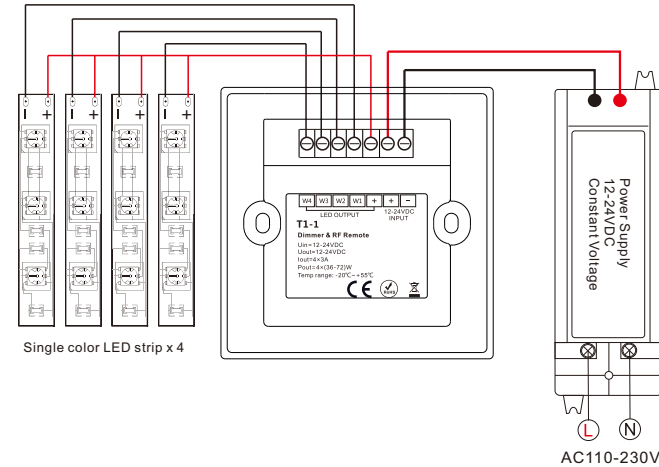


• RGBW panel

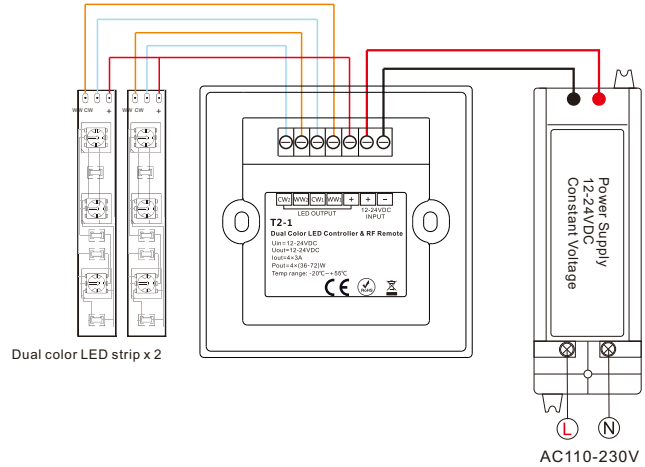


Wiring diagram for PWM output

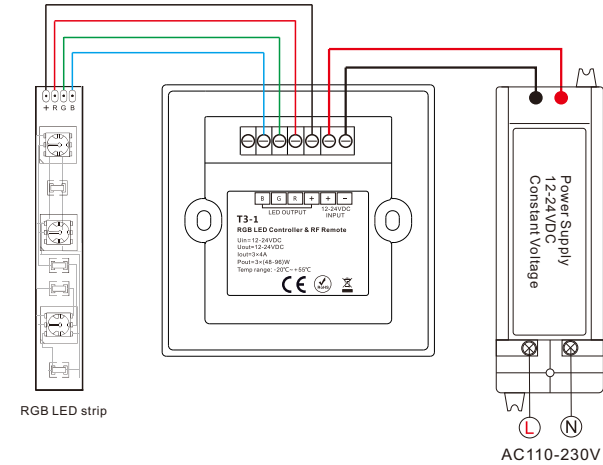
• T1-1 Single color panel



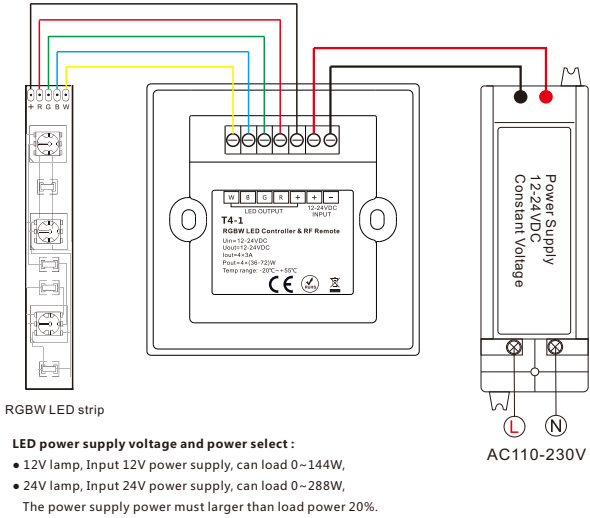
• T2-1 Dual color panel



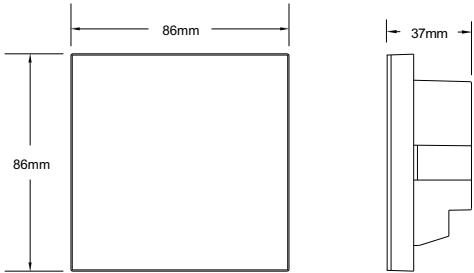
• T3-1 RGB panel



• T4-1 RGBW panel

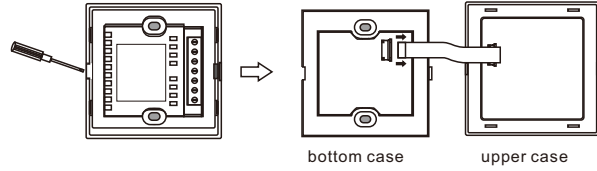


Dimension

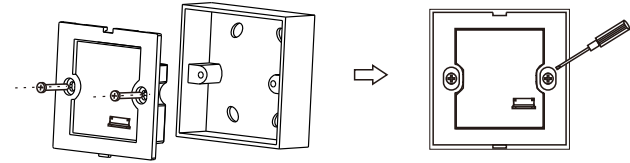


Installation diagram

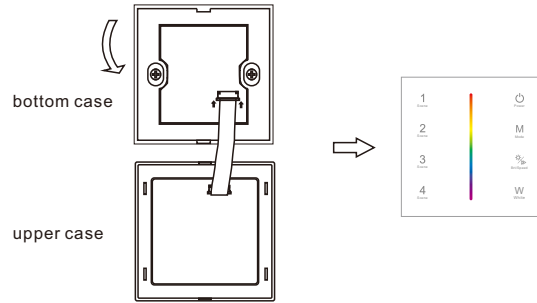
1. Flip panel, inserted into the card edge aperture with a small screwdriver, gently pry and open the panel. pull out FPC lock catch, then remove FPC line.



2. After connect wires, put bottom case into 86 bottom box, put in the screw and tighten.



3. Connect FPC line. then from top to bottom, moderately cover upper case, complete installation.



NOTES:

- In order to ensure safety, turn off the power first before wiring, ensure correct wiring to avoid short circuit.
- In the process of installation, do not damage or twist FPC line, in order to avoid damage.

Malfunctions analysis & troubleshooting

Malfunctions	Causes	Troubleshooting
No light	1. No power. 2. Wrong connection or insecure.	1. Check the power. 2. Check the connection.
Wrong color	1. Wrong connection of R/G/B/W wires.	1. Reconnect R/G/B/W wires.
Uneven intensity between front and rear, with voltage drop	1. Output cable is too long. 2. Wire diameter is too small. 3. Overload beyond power supply capability. 4. Overload beyond controller capability.	1. Reduce cable or loop supply. 2. Change wider wire. 3. Replace higher power supply. 4. Add power repeater.
No response from the remote	1. The battery has no power. 2. Beyond controllable distance. 3. The controller did not match the remote.	1. Replace battery. 2. Reduce remote distance. 3. Re-match the remote.

Safety information

1. The product shall be installed and serviced by a qualified person.
2. The product is non-waterproof. Please avoid the sun and rain.
3. Good heat dissipation will prolong the working life of the controller, Please ensure good ventilation.
4. Please check if the output voltage of any power supplies used comply with the working voltage of the product.
5. Ensure all wire connections and polarities are correct and secure before applying power to avoid any damages to the LED lights.
6. If a fault occurs please return the product to your supplier. Do not attempt to fix this product by yourself.