

# Wall Mounted Rotary Panel Constant Voltage Dimming Controller & RF 2.4G Remote

CE ROHS



T5-1

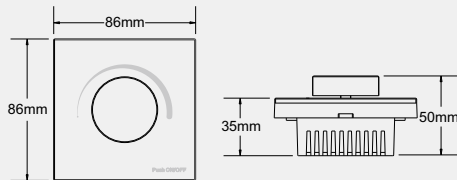
## Summary

- Rotary panel dimming PWM constant voltage controller, can also used as RF dimming remoter.
- Rotate knob to change brightness, support push, long push operation.
- Smooth dimming and switching without any flickering.
- Adopt 2.4GHz wireless technology, when used as controller, can accept up to 10 remoter control. when used as remoter, can remote control multiple dimming controller.
- Can work with WiFi-relay controller after install APP on IOS and Android system.
- Work with power repeater to expand output unlimitedly.

## Technical Parameters

- Input voltage: 5-24VDC
- Output type: PWM constant voltage+RF(2.4G)
- Output current: 2CH, 5A/CH
- Output power: 50-240W
- Grey levels: 4096/CH
- Dimming range: 0-100%
- Remote distance: 30m
- Working temperature: -30°C~55°C
- Product size: L86×W86×H50mm
- Net weight: 110g

## Dimension



## Key function

- **Push:** Turn on or off light.
- After turn on light, rotate knob to change brightness, 2.5 turns, 50 levels.
- **Long push(1-5s):** Fine adjust brightness.

## Panel controller match remoter method

- **Match:** Turn on light, turn off, immediately push for 5s, within 5s, press any key of the remoter.
- **Delete:** Turn on light, turn off, immediately push for 10s, delete all matched remoters.

## Panel remoter match receiver method

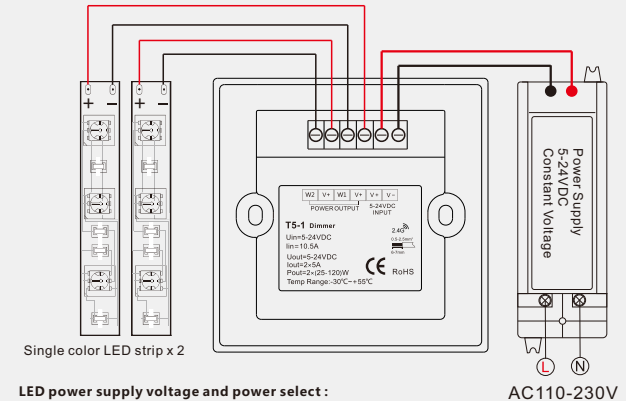
### For controller with match key

- **Match:** Short press match key, within 5s, push the panel.
- **Delete:** Long press match key for 5s, delete all matched remoters.

### For smart lamp

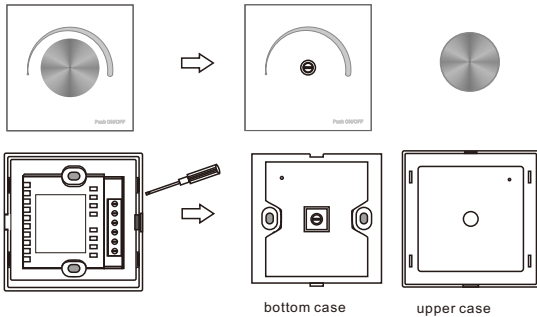
- **Match:** Switch off the power, then switch on power again, short push the panel 3 times within 5s after power on, the link is done once the light blinks 3 times.
- **Delete:** Switch off the power, then switch on power again, short push the panel 5 times within 5s after power on, the unlink is done once the light blinks 5 times.

## Wiring diagram

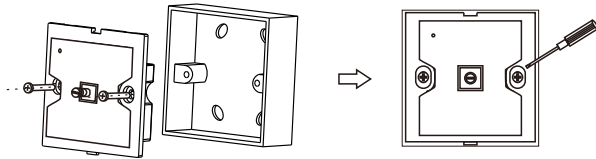


## Installation diagram

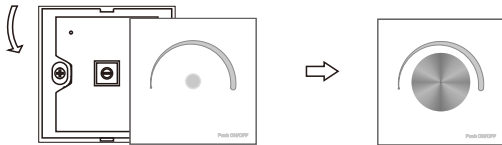
1. Remove the knob, then flip panel, inserted into the card edge aperture with a small screwdriver, gently pry and open the panel.



2. After connect wires, put bottom case into 86 bottom box, put in the screw and tighten.



3. From top to bottom, moderately cover upper case, then mount knob, complete installation.



### NOTES:

- In order to ensure safety, turn off the power first before wiring, ensure correct wiring to avoid short circuit.
- In the process of installation, don't push the knob hardy, so as not to loose knob spindle and scratch panel.

## Malfunctions analysis & troubleshooting

Malfunctions	Causes	Troubleshooting
No light	1. No power. 2. Wrong connection or insecure.	1. Check the power. 2. Check the connection.
Uneven intensity between front and rear, with voltage drop	1. Output cable is too long. 2. Wire diameter is too small. 3. Overload beyond power supply capability. 4. Overload beyond controller capability.	1. Reduce cable or loop supply. 2. Change wider wire. 3. Replace higher power supply. 4. Add power repeater.
No response from the remoter	1. The battery has no power. 2. Beyond controllable distance. 3. The controller did not match the remoter.	1. Replace battery. 2. Reduce remote distance. 3. Re-match the remoter.

## Safety & Warnings

1. The product shall be installed and serviced by a qualified person.
2. This product is non-waterproof. Please avoid the sun and rain.
3. Good heat dissipation will prolong the working life of the controller, please ensure good ventilation.
4. Please check if the output voltage of any power supplies used comply with the working voltage of the product.
5. Ensure all wire connections and polarities are correct and secure before applying power to avoid any damages to the LED lights.
6. If a fault occurs please return the product to your supplier. Do not attempt to fix this product by yourself.

## Warranty Agreement

### 1. 3-year warranty:

- The warranty is for free repair or replacement and covers manufacturing faults only.
- Do not include fees of on site maintenance and consumable parts.

### 2. Limited Warranty

- Artificial damage caused by improper use, such as use inappropriate power supply, improper accessories, improper installation, did not follow the instructions, error using or negligence.
- Any damages caused by force majeure, such as natural disaster, abnormal voltage.
- The normal use of products caused by aging, wear and tear, but it does not affect the normal use.