

Wall Mounted Rotary Panel RGB/CCT/DIM(3 in 1) LED Constant Voltage Controller & RF 2.4G Remote



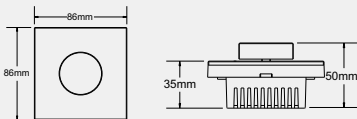
Summary

- Rotary panel RGB/CCT/DIM(3 in 1) PWM constant voltage controller, can also used as 2.4GHz RGB/CCT/DIM RF remote.
- Set the exact version(DIM/CCT/RGB/RF ON OR OFF) you want just by dip switch setting on the back.
- Rotate knob to change color, color temperature, brightness, support push, push twice, long push operation.
- Smooth dimming and switching without any flickering.
- When used as RGB controller, built in 3 change mode optional.
- Adopt 2.4GHz wireless technology, when used as controller, can accept up to 10 remoter control when used as remoter, can remote control multiple controller.
- Can work with WiFi-relay controller after install APP on IOS and Android system.
- Work with power repeater to expand output unlimitedly.

Technical Parameters

- Remote distance: 30m
- Grey levels: 4096/CH
- Dimming range: 0-100%
- Working temperature: -30°C~55°C
- Product size: L86×W86×H50mm
- Net weight: 119g

Dimension



The product can be used as each version separately by factory setting. Here is 3 versions with details as below:

1. Dimmer

- Input Voltage: 5-24VDC
- Output Type: PWM constant voltage + RF(2.4G)
- Output Current: 3*1CH, 4A/CH (Total 12A)
- Output Power: 5V < 60W 12V < 144W 24V < 288W

Operation

- Push: Turn on or off light.
- After turn on light, rotate knob to change brightness, 2.5 turns, 50 levels.
Or Long push the knob 1-5s to change brightness, 256 levels.

2. CCT

- Input Voltage: 5-24VDC
- Output Type: PWM constant voltage + RF(2.4G)
- Output Current: 2CH, 5A/CH
- Output Power: 5V < 50W 12V < 120W 24V < 240W

Operation

- Push: Turn on or off light.
- After turn on light, rotate knob to change color temperature, 2.5 turns, 50 levels.
Or Long push the knob 1-5s to change brightness, 256 levels.

3. RGB

- Input Voltage: 5-24VDC
- Output Type: PWM constant voltage + RF(2.4G)
- Output Current: 3CH*4A
- Output Power: 5V < 60W 12V < 144W 24V < 288W

Operation

- Push: Turn on or off light.
- After turn on light, rotate knob to change color, 3 turns, 60 colors.
Or Long push(1-5s): Fine adjust saturation, 256 levels.
Or Push twice: Rotate knob to adjust brightness, 1 turn, 20 levels.

Dip switch setting



- Dip switch 1-2 bit: set RGB/CCT/DIM light type.
- Dip switch 3rd bit: set downside disable remoter, set upside("ON") enable remoter.

Caution: before power on, you must confirm the selection of dip switch.

Panel controller match remoter method

- Match: Turn on light, turn off, immediately push for 5s, within 5s, press any key of the remoter.
- Delete: Turn on light, turn off, immediately push for 10s, delete all matched remoters.

Panel remoter match receiver method

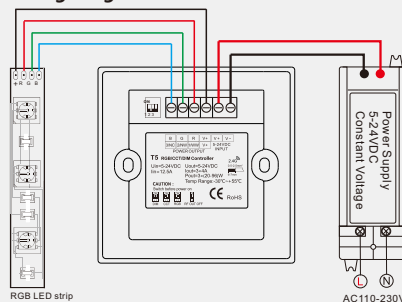
For controller with match key

- Match: Short press match key, within 5s, push the panel.
- Delete: Long press match key for 5s, delete all matched remoters.

For smart lamp

- Match: Switch off the power, then switch on power again, short push the panel 3 times within 5s after power on, the link is done once the light blinks 3 times.
- Delete: Switch off the power, then switch on power again, short push the panel 5 times within 5s after power on, the unlink is done once the light blinks 5 times.

Wiring diagram



LED power supply voltage and power select:

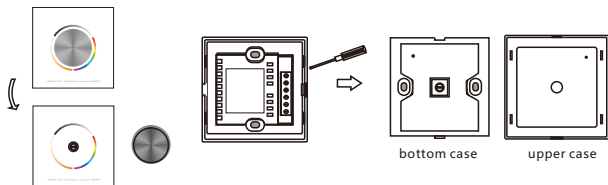
- 5V lamp, Input 5V power supply, can load 0~60W,
 - 12V lamp, Input 12V power supply, can load 0~144W,
 - 24V lamp, Input 24V power supply, can load 0~288W.
- The power supply power must larger than load power 20%.

RGB change mode list

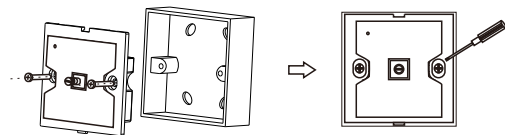
No.	Name	No.	Name	No.	Name
1	Static red	11	Green strobe	21	Red yellow smooth
2	Static green	12	Blue strobe	22	Green cyan smooth
3	Static blue	13	White strobe	23	Blue purple smooth
4	Static yellow	14	RGB strobe	24	Blue white smooth
5	Static cyan	15	7 color strobe	25	RGB+W smooth
6	Static purple	16	Red fade in and out	26	RGBW smooth
7	Static white	17	Green fade in and out	27	RGBY smooth
8	RGB jump	18	Blue fade in and out	28	Yellow cyan purple smooth
9	7 color jump	19	White fade in and out	29	RGB smooth
10	Red strobe	20	RGBW fade in and out	30	6 color smooth

Installation diagram

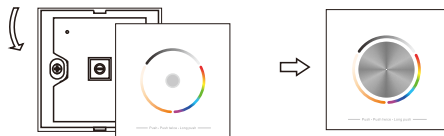
1. Remove the knob, then flip panel, inserted into the card edge aperture with a small screwdriver, gently pry and open the panel.



2. After connect wires, put bottom case into 86 bottom box, put in the screw and tighten.



3. From top to bottom, moderately cover upper case, then mount knob, complete installation.



NOTES:

- In order to ensure safety, turn off the power first before wiring, ensure correct wiring to avoid short circuit.
- In the process of installation, don't push the knob hardly, so as not to loose knob spindle and scratch panel.

Malfunctions analysis & troubleshooting

Malfunctions	Causes	Troubleshooting
No light	1. No power. 2. Wrong connection or insecure.	1. Check the power. 2. Check the connection.
Wrong color	1. Wrong connection of RGB wires.	1. Reconnect RGB wires.
Uneven intensity between front and rear, with voltage drop	1. Output cable is too long. 2. Wire diameter is too small. 3. Overload beyond power supply capability. 4. Overload beyond controller capability.	1. Reduce cable or loop supply. 2. Change wider wire. 3. Replace higher power supply. 4. Add power repeater.
No response from the remoter	1. The battery has no power. 2. Beyond controllable distance. 3. The controller did not match the remoter.	1. Replace battery. 2. Reduce remote distance. 3. Re-match the remoter.

Safety & Warnings

1. The product shall be installed and serviced by a qualified person.
2. This product is non-waterproof. Please avoid the sun and rain.
3. Good heat dissipation will prolong the working life of the controller, please ensure good ventilation.
4. Please check if the output voltage of any power supplies used comply with the working voltage of the product.
5. Ensure all wire connections and polarities are correct and secure before applying power to avoid any damages to the LED lights.
6. If a fault occurs please return the product to your supplier. Do not attempt to fix this product by yourself.

Warranty Agreement

1. 3-year warranty:
 - The warranty is for free repair or replacement and covers manufacturing faults only.
 - Do not include fees of on site maintenance and consumable parts.
2. Limited Warranty
 - Artificial damage caused by improper use, such as use inappropriate power supply, improper accessories, improper installation, did not follow the instructions, error using or negligence.
 - Any damages caused by force majeure, such as natural disaster, abnormal voltage.
 - The normal use of products caused by aging, wear and tear, but it does not affect the normal use.