

# Zigbee Smart Curtain Motor

## Model No.:CM(WZ)

Electronic travel memory / Pull-to-start / Meet resistance and stop / Commutation function / Wireless remote control / Zigbee wireless protocol

### Features

- Tuya /Smart life APP cloud control, support timing on/off, commutation function.
- Can set different itineraries according to different curtain track lengths.
- Pull-to-start: In the power-on state, pull the curtain to move 10cm, and the curtain will automatically start running.
- Power failure pull: In power-off state, it can be opened/closed manually like ordinary curtains.
- Meet resistance and stop: When the curtain running meets resistance, it will stop automatically to protect the whole system.
- Match with RF 2.4G remote control optional.



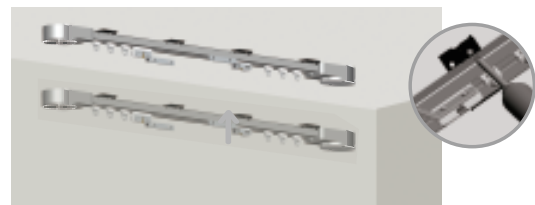
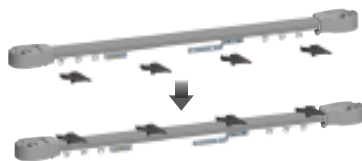
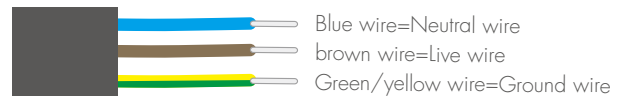
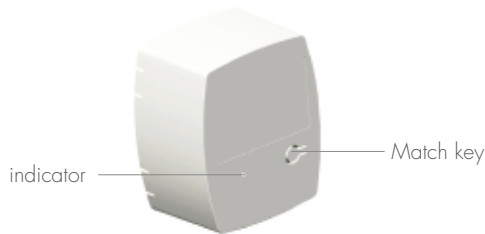
CE RoHS LVD RED

### Technical Parameters

Hardware parameters	
Input voltage	100-240VAC
Rated torque	1.2 N.m
Moving Speed	14 cm/s
Single max. running time	4min
Input signal	RF 2.4GHz + Zigbee

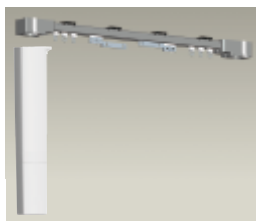
Environment	
Operation temperature	Ta: -10°C~ 55°C
Package	
Size	L345 x W120 x H75mm
Gross weight	0.907kg

### Mechanical Structures and Installations



**1** Check the position of the bracket, find a suitable position to install on the curtain track.

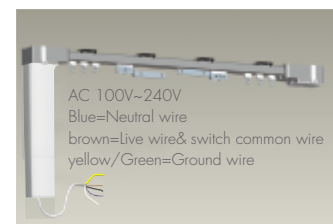
**2** Install the curtain track into the pre-designed position and fix it with screws.



**3** motor Installations

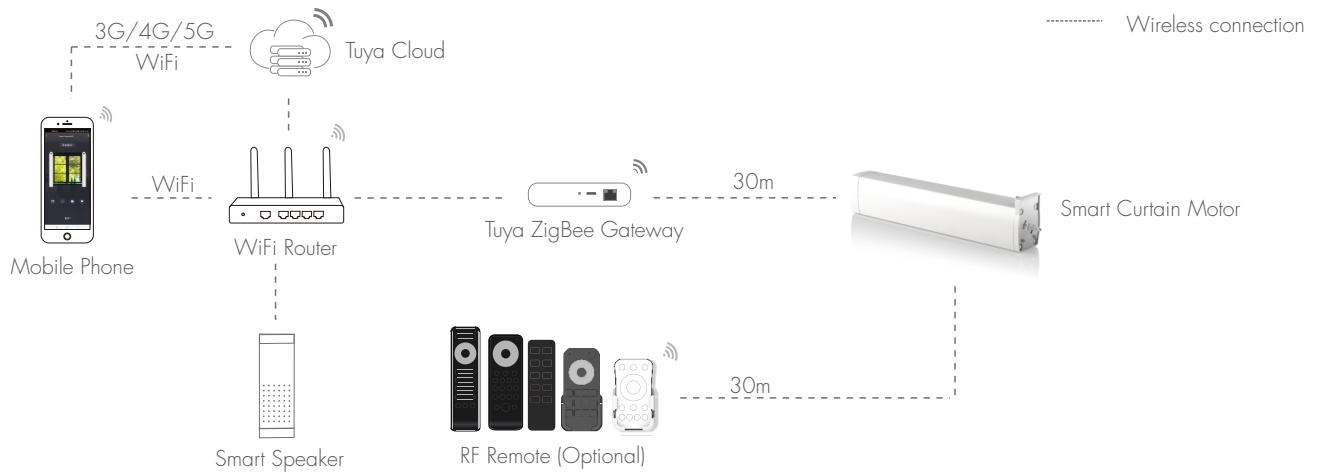


**4** After installation, please confirm whether the installation is successful.



**5** Effects of motor after installation.

## System wiring



Note:

1. The above distance is measured in a spacious (no obstacle) environment. Please refer to the actual test distance before installation.
2. Please check if the WiFi router net is in the 2.4G band, the 5G band is not available, and do not hide your router network.

## APP network connection

Please download Tuya/Smart Life APP according to your region.  
 Match: Long press Match/Set key for 5s, or push twice Match/Set key fastly, or repeat power on and off for 5 consecutive times, clear previous network connection, enter Smart config mode, the LED indicator will fast flash.



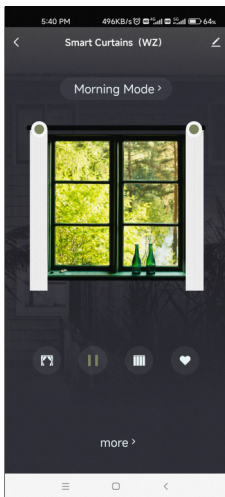
Smart Life



Tuya Smart

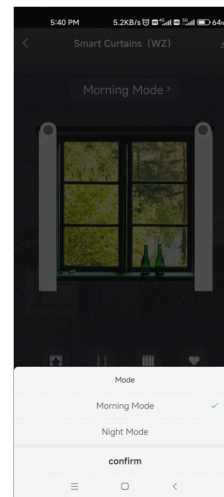
If the Tuya/Smart Life APP adds the device successfully, the LED indicator will stop flashing and keep bright.  
 In Tuya /Smart Life APP, you can find Smart Curtains(WZ) device.

## APP interface



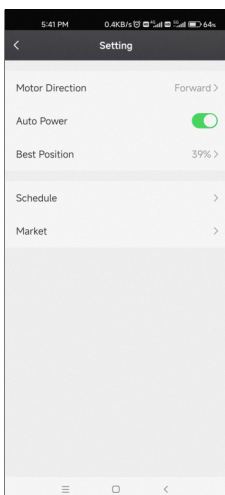
### Main interface

With curtain on /off / pause, Set the best position (The opening percentage of curtains) function



### Working mode interface

Morning mode: curtain on  
 Night mode: curtain off



### Set interface

**Curtain Motor Direction:** The default motor is forward, 100% of the curtains are fully opened, and reverse is 100% of the curtains are fully closed.  
 When changing the direction of the motor, the travel will be lost, need to control the curtain (open and close once) to get the travel.

**Auto start switch:** On means that in the power-on state, pull the curtain to move 10cm, and the curtain will automatically start running. Off means that the curtain can be opened/closed manually, and the curtain will not start running automatically.

**Best position:** After setting the percentage of the ideal position, click the best position on the main interface, and the curtain will automatically start moving to the corresponding position.

**Timing:** You can set the timing to open/close the curtains and set a weekly fixed time to automatically open/close the curtains.

## Match remote control (Optional)

End user can choose the suitable match/delete ways. Two options are offered for selection:

### Use match key

Match:

Short press match key, immediately press on/off key (single zone remote) or zone key (multiple zone remote) on the remote.

The LED indicator fast flash a few times means match is successful.

Delete:

Press and hold match key for 10s, the LED indicator fast flash a few times means all matched remotes were deleted.

### Use Power Restart

Match:

Switch off the power, then switch on power, repeat again.

Immediately short press on/off key (single zone remote) or zone key (multiple zone remote) 3 times on the remote.

The light blinks 3 times means match is successful.

Delete:

Switch off the power, then switch on power, repeat again.

Immediately short press on/off key (single zone remote) or zone key (multiple zone remote) 5 times on the remote.

The light blinks 5 times means all matched remotes were deleted.

**Note:**

Curtain remote control only supports single-zone/multi-zone RF2.4GHz single color dimming remote control series.

After the remote control matched successfully, on/off key of single-zone remote controller or on/off key

of multi-zone remote controller controls the switch of curtain, brightness adjustment controls the position percentage of the curtain.

## Note

1. When using for the first time or restoring factory settings, when the curtain controller has no total travel, you need to control the curtain controller to open and close the curtain once, make the curtain run meet resistance and stop to obtain the total travel.
2. When the power is turned on again, the curtain motor will lose its current percentage position.  
Need to control the curtain to open or close once, make the curtain run meet resistance and stop to obtain the curtain position.
3. When replacing the curtain track and resetting the itinerary, need to restore the factory settings.
4. Restore factory settings: Long press the match key for 15s.