

# T1(IT), T2(IT), T3(IT), T4(IT)

## Wall Mounted Touch Panel

1-4 color/Glass touch panel/Color wheel/DC input/4 channel constant voltage PWM output/Wireless remote control

Wall mounted single color/dual color/RGB/RGBW LED controller T1(IT) / T2(IT) / T3(IT) / T4(IT) is a full touch controller with 4 channel constant voltage output, and offers fast and accurate color adjustment with unique design touch color wheel.

### Feature

- Touch panel single color, dual color, RGB or RGBW PWM constant voltage controller.
- Ultra sensitive high strength glass touch panel with touch color wheel in the middle and backlighting.
- Smooth and accurate color adjustment by touching the color slide.
- Adopt 2.4GHz wireless technology, remote distance up to 30m.
- Touch keys with chord tones and LED indicator.

### Technical parameter

Model	Input voltage	Output signal	Output current	Output power	Light type	Size(mm)
T1(IT)	12-24VDC	PWM	4CH,3A/CH	144-288W	Single color	120x80x37
T2(IT)	12-24VDC	PWM	4CH,3A/CH	144-288W	Dual color	120x80x37
T3(IT)	12-24VDC	PWM	3CH,4A/CH	144-288W	RGB	120x80x37
T4(IT)	12-24VDC	PWM	4CH,3A/CH	144-288W	RGBW	120x80x37

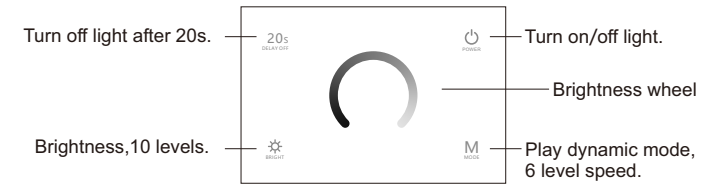
### Match guide

Use power-up to match the touch panel dimmer with the RF remote (optional).

1. Match: Switch off the power, then switch on power again, short press on/off key or zone key 3 times on the RF remote quickly within 5s after power on, the link is done once the light blinks 3 times.
2. Delete: Switch off the power, then switch on power again, short press on/off key or zone key 5 times on the RF remote quickly within 5s after power on, the unlink is done once the light blinks 5 times.
3. Multiple zone remote only use zone key to match each zone receiver.

### Key function

#### • Single color panel T1(IT)



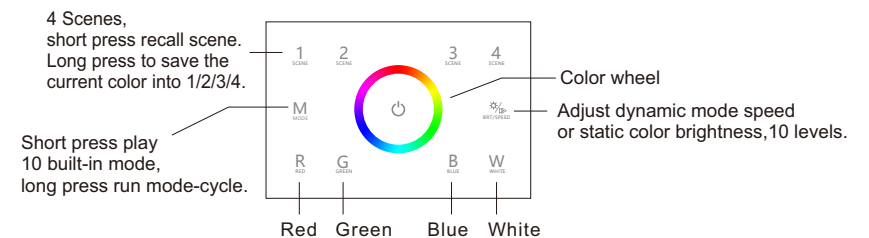
#### • Dual color panel T2(IT)



#### • RGB panel T3(IT)



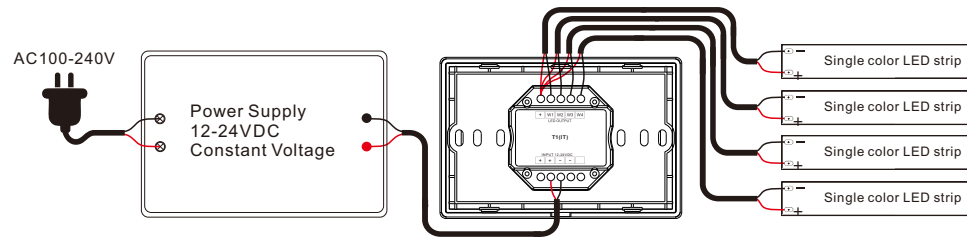
#### • RGBW panel T4(IT)



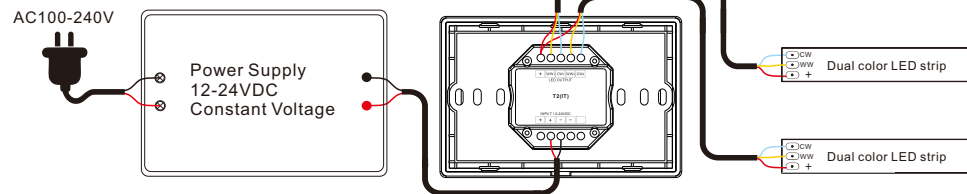
**Note:** After touch power key to turn off light, long press power key for 5 seconds will turn on or turn off tone.

## Wiring diagram for PWM output

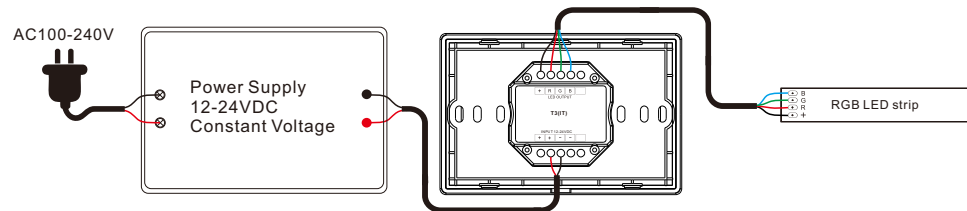
### • T1(IT) Single color panel



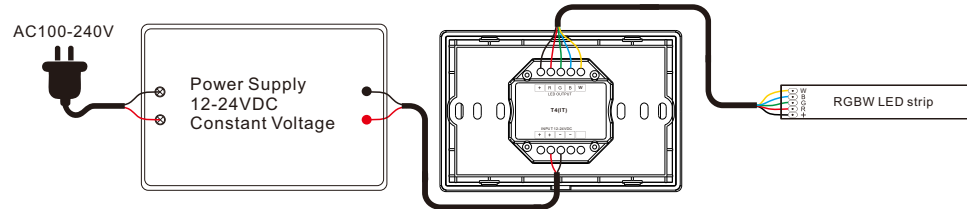
### • T2 Dual color panel



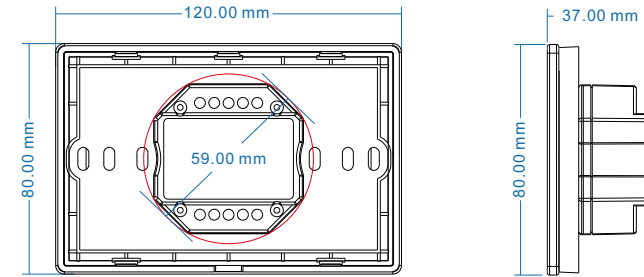
### • T3 RGB panel



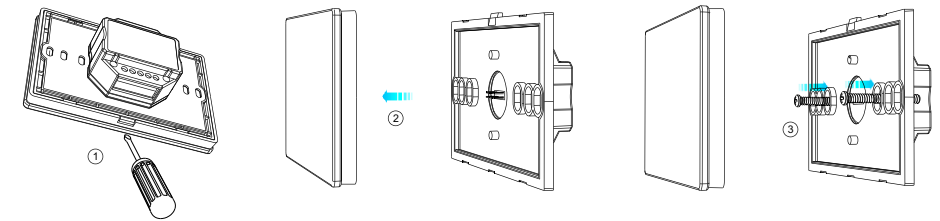
### • T4 RGBW panel



## Dimension



## Installation diagram



## Malfunctions analysis & troubleshooting

Malfunctions	Causes	Troubleshooting
No light	1. No power. 2. Wrong connection or insecure.	1. Check the power. 2. Check the connection.
Wrong color	1. Wrong connection of R/G/B/W wires.	1. Reconnect R/G/B/W wires.
Uneven intensity between front and rear, with voltage drop	1. Output cable is too long. 2. Wire diameter is too small. 3. Overload beyond power supply capability. 4. Overload beyond controller capability.	1. Reduce cable or loop supply. 2. Change wider wire. 3. Replace higher power supply. 4. Add power repeater.

## Safety information

1. The product shall be installed and serviced by a qualified person.
2. The product is non-waterproof. Please avoid the sun and rain.
3. Good heat dissipation will prolong the working life of the controller, Please ensure good ventilation.
4. Please check if the output voltage of any power supplies used comply with the working voltage of the product.
5. Ensure all wire connections and polarities are correct and secure before applying power to avoid any damages to the LED lights.
6. If a fault occurs please return the product to your supplier. Do not attempt to fix this product by yourself.