



Product Specification

Name: European standard touch panel two-piece series

Model: TM06-2E



Summarization

Touch panel two-piece series is a new high-end controller which newly developed by our company, it adopts glass panel design, is beautiful and fashionable in appearance. It adopts high precision capacitance touch control chip, increases the touch sensitivity, reduces trigger which caused by mistake. It is used for controlling a variety of lamp whose source of light is LED. For instance, point source of light, flexible light strip, panel lights etc., it has many advantages such as convenient to connect, easy to use and others. Touch remote control with advanced touch design, through combine the touch panel controller and remote control to achieve flexible control. Touch remote control good performance, looks beautiful, stylish, easy to use.

Technical Parameters

Controller:

Working temperature: -20-60℃

Output voltage: DC 12~24V

Connect way: common anode

Packing size: L105*W105*H53 mm

Gross weight: 177g

Output current: 8A

Output power: DC12V:<96W, DC24V:<196W

Power supply voltage: DC 12~24V

Output: 1 channel

External dimension: L80*W80*H41.8 mm

Net weight: 127g

Static power consumption: <1W

Working frequency: 1KHz

Remote control:



Superlightingled Optoelectronics(ASIA) Co.,Ltd

<https://www.superlightingled.com>

Working temperature: -20-60°C

Power supply voltage: 1.5V*2

Static current: 85uA

Remote control distance: >20m

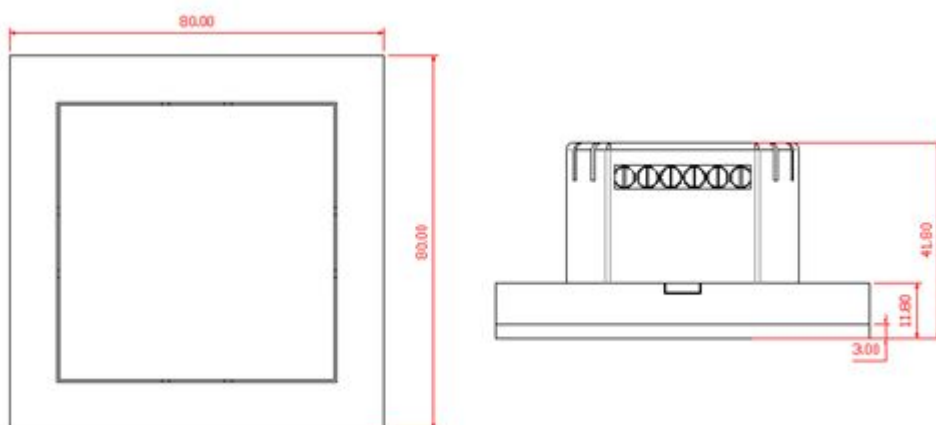
Power supply mode: AAA * 2

Stand-by power consumption: 0.025mW

Working current: 26mA

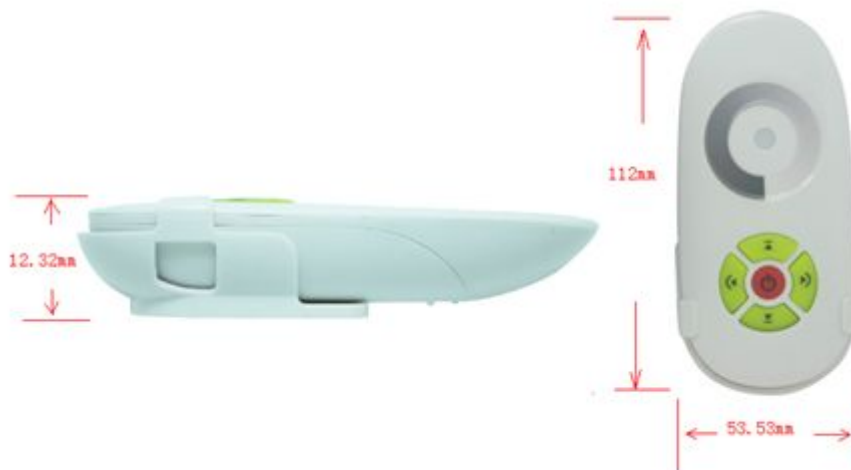
Stand-by time: 6 month

External dimension



Unit: mm

Remote control





Interface instruction



“1”、“2”: power input pins, input voltage range is 12-24V, “1” is negative, “2” is positive;
“3”、“4”: power output pins, output voltage is 12-24V, output maximum current is 8A, “3” is positive, “4” is negative.

Operating instructions

Controller:



: Touch the color wheel, whether in a static or dynamic

mode will switch to touch the ring on the corresponding static brightness.



: Under any state, can open or close controller output; when controller in open state, long press this key more than 3s, can open or close the buzzer output.



: Static state brightness add, 235 levels,dynamic state speed add, 100 levels;



: Static state brightness minus, 235 levels,dynamic state speed minus, 100 levels;



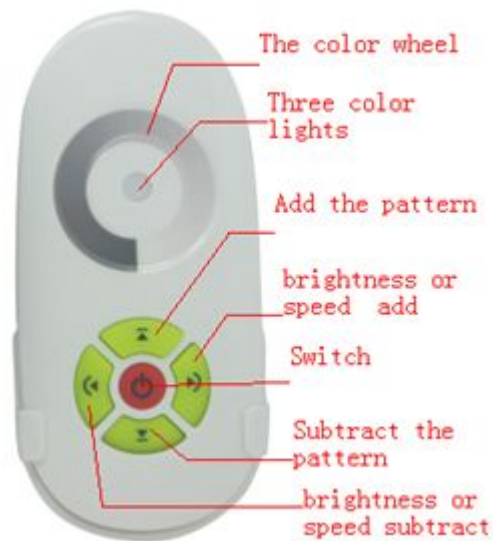
: Mode minus;



: Mode add;



Remote control:



Standard change function as below:

Number	Mode	Number	Mode
1	Blasting flash	5	Stroboflash
2	Breathing mode	6	One-third strobe
3	Gradually fade up/down	7	Two-thirds strobe
4	Gradually fade in/out	8	Police strobe

Typical Application

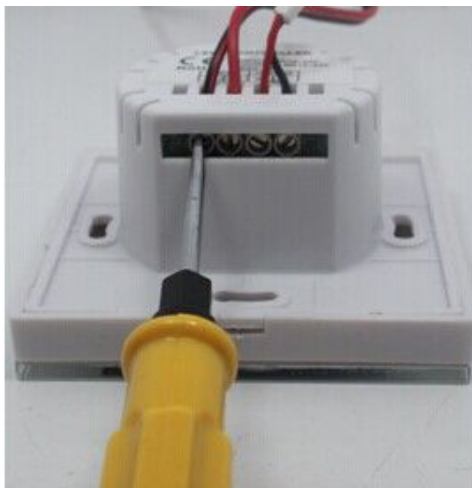




Installation Method

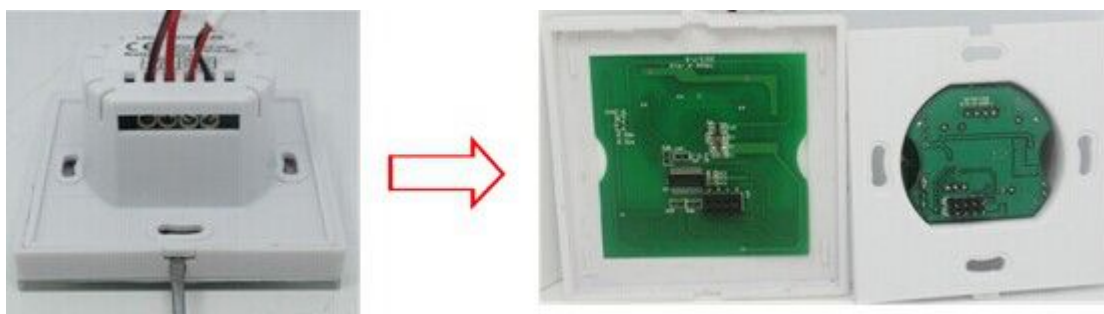
1. Wiring

In the Typical Application. Reference typical application circuit.



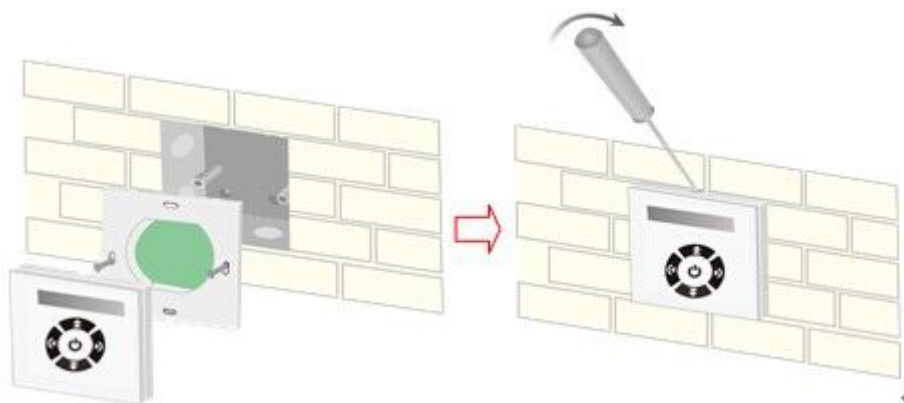
2. Open the touch panel

① As shown in figure, use screwdriver in touch panel gently pry gaps, take the panel;



3. Installation switch base

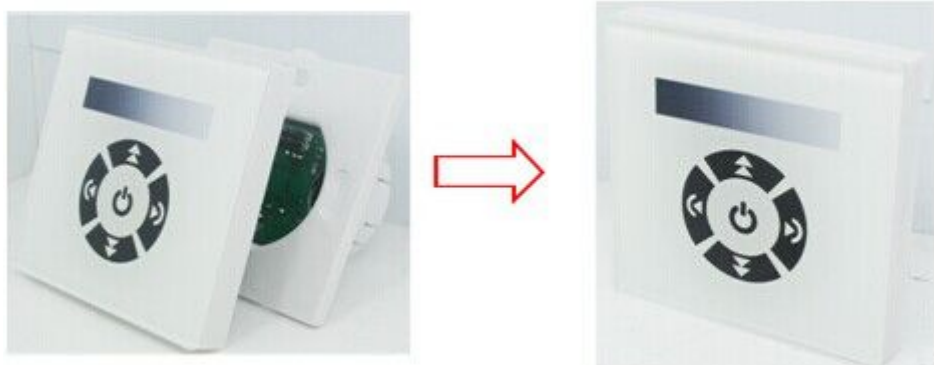
As shown in figure, connected line will touch installed on the wall in the cassette controller, screw in screw, make fixed in the wall, will be installed base to the wall.



4. Cover touch panel



Look the panel direction, then cover panel,as shown in the figure:



Remark

1. Connect the load wire at first, following by the power wire; **Please ensure short circuit can not occur between connecting wire before you turn on the power;**
2. The supply voltage of controller ranges in DC12-24V, it may burn out the controller once exceed the voltage.
3. The remote control enter sleep mode after 30s, now the function of chromatic circle is not working. If you need to use the remote, please press any key on the remote to awaken it.