



Product Specifications

NAME: Low-voltage Touch Panel Color Temperature Controller
MODEL: TM072E



Summarization

Touch panel controller is a new high-end controller which newly developed by our company. It adopts glass panel design, is beautiful and fashionable in appearance. It adopts high precision capacitance touch control chip, increases the touch sensitivity, reduces trigger which caused by mistake. It is used for controlling a variety of lamp whose source of light is LED. For instance, point source of light, flexible light strip, panel lights etc., it has many advantages such as convenient to connect, easy to use and others. Touch remote control adopts advanced touch design, through combining the touch panel controller with remote control to achieve flexible control. Touch remote control has good performance, looks beautiful, stylish, easy to use.

Main technical parameters

Controller:

Working temperature: -20-60℃
Output voltage: DC12-24V
Connect way: common anode
Packing size: L105*W105*H53mm
Gross weight: 178.6g
Output current: < 4A(each channel)
Output power: 12V:< 96W, 24V:< 192W

Power supply voltage: DC 12-24V
Output: 2 channel
External dimension: L80*W80*H41.8 mm
Net weight: 128g
Static power consumption: <1W
Working frequency: 1KHz



Remote control:

Working temperature: -20-60℃

supply voltage: 1.5V * 2

standby current: 85uA

remote distance: >20m

power supply mode: AAA * 2

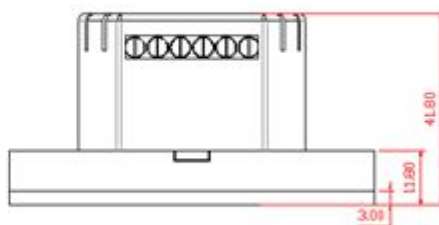
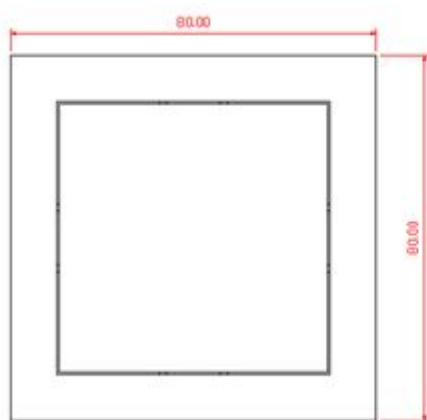
standby power consumption: 0.00025mW

working current: 26mA

standby time: 6 months

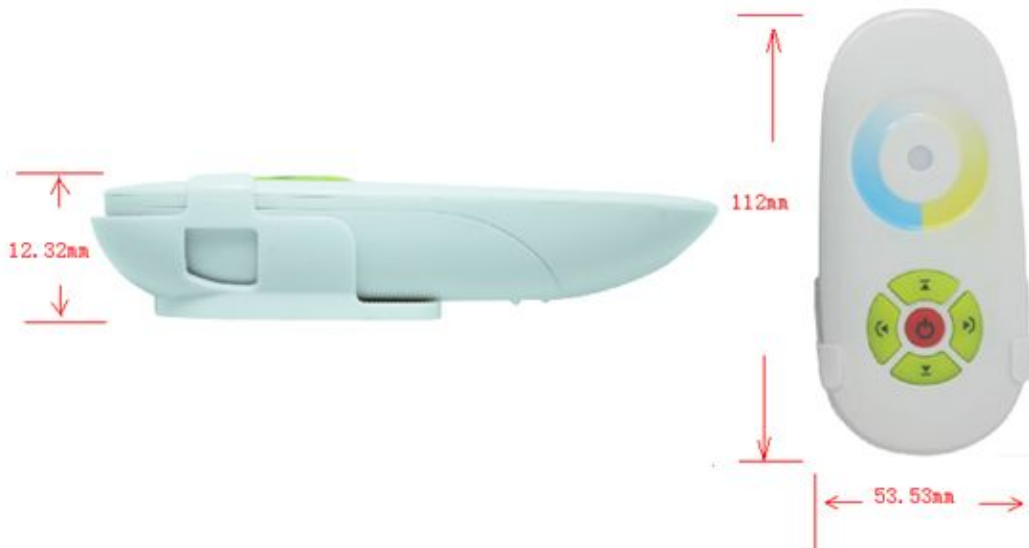
External Dimension

Controller



unit: mm

Remote control:



Interface Specifications



“1”, “2”: power input pins, input voltage range is 12-24V, “1” is negative pole, and “2” is positive pole.

“3”, “4”, “5”: power output pins, output voltage is 12-24V, maximum output current is 4A, “3” is positive pole, “4” is interface of cool light, “5” is interface of warm light.

Operating instruction

1. Description of function keys



: when touch the color ring, it will be switch to the static brightness whatever is in static mode or dynamic mode.



: you could turn on/off controller at any state; When the dimmer is turned on, long press the key for 3 seconds, you can turn on/off output of buzzer;



: brightness reduce, a total of 80 levels.



: brightness increase, a total of 80 levels.

Remote control:



Typical Application

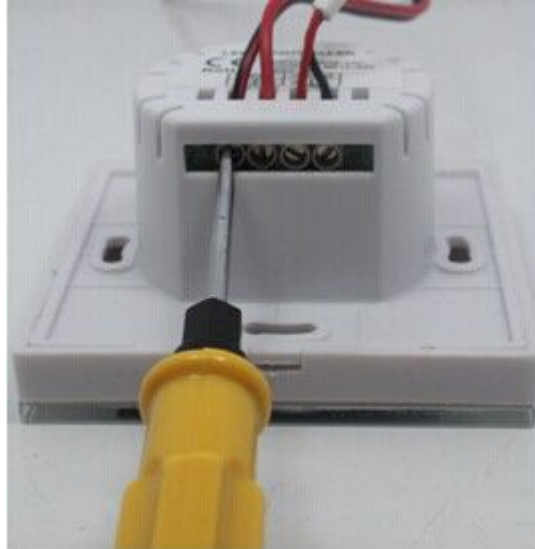


Installation Method



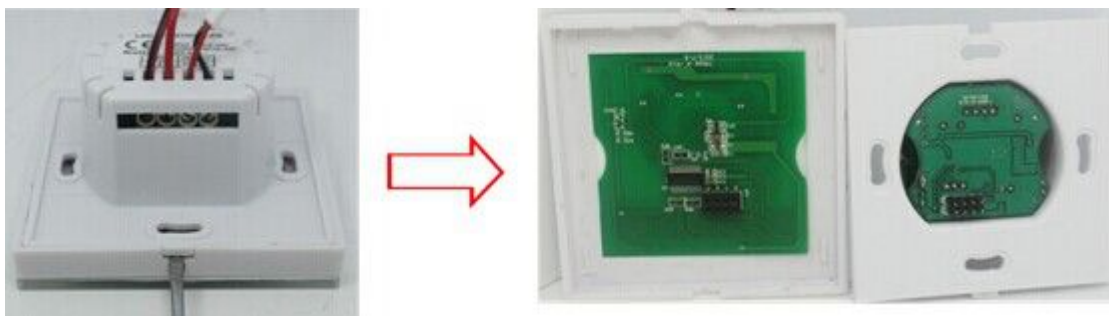
1. wiring

Connect wiring according to typical application. Refer to typical application;



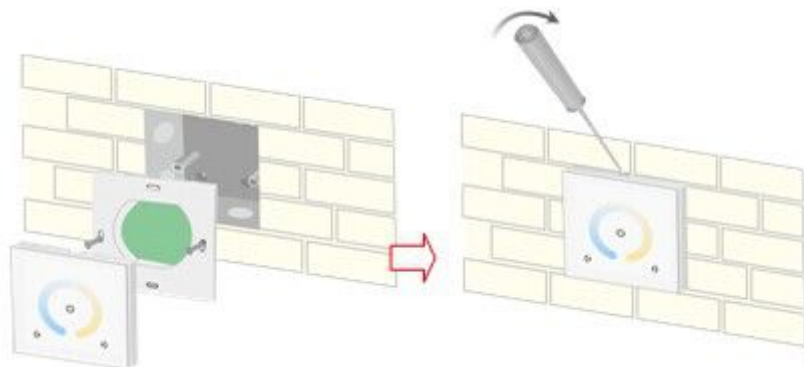
2. open touch panel

Gently pry gaps in touch panel with a screwdriver, and then you can slowly remove the panel, as shown below;



3. Install switch base

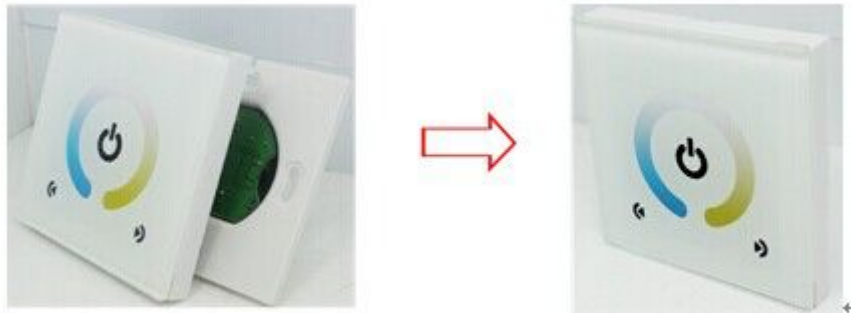
As shown in the picture, mount the controller on the cassette in the wall after connecting the wire, and then nail the screw, fix it on the wall, finally you can install the switch pedestal on the wall;



4. Cover touch panel



Watch the direction of the panel and cover it as below:



Remarks

1. Connect the load wire at first, following by the power wire; **Please ensure short circuit can not occur between connecting wire before you turn on the power;**
2. The supply voltage of controller ranges in DC12-24V, it may burn out the controller once exceed the voltage.
3. The remote control enter sleep mode after 30s, now the function of chromatic circle isn't working. If you need to use the remote, please press any key on the remote to awaken it.