



Product Specifications

NAME: Low –voltage touch panel Color-temperature Controller (America standard)

MODEL: TM07U



Summarization

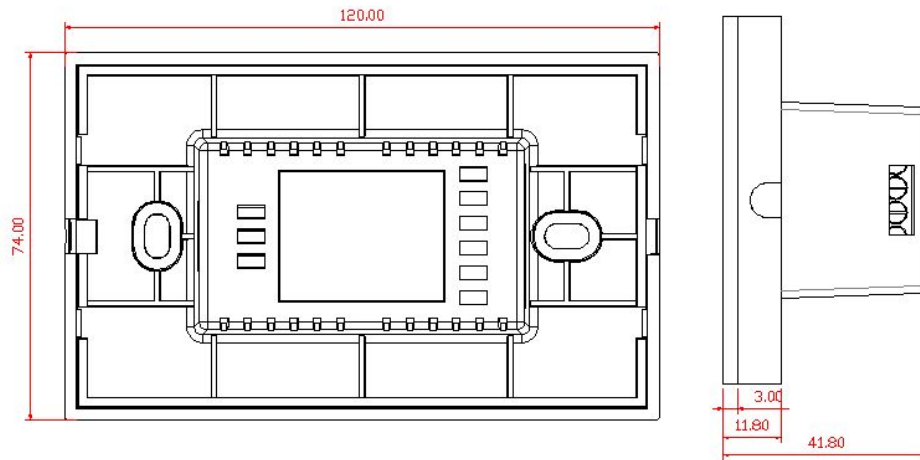
Touch panel controller is a new high-end dimmer which newly developed by our company. It adopts glass panel design, is beautiful and fashionable in appearance. It adopts high precision capacitance touch control chip, increases the touch sensitivity, reduces trigger which caused by mistake. It is used for controlling a variety of lamp whose source of light is LED. For instance, point source of light, flexible light strip, panel lights etc., it has many advantages such as convenient to connect, easy to use and others.

Technical Parameters

- Working temperature: -20-60 °C
- Supply voltage: DC12-24V
- Output voltage: DC12-24
- Output: 2 channels
- Connection mode: common anode
- External dimension: L74 X W120X H41.8mm
- Packing size: L150 X W100X H57mm
- Net weight: 126g
- Gross weight: 188g
- Static power consumption: <1W
- Output current: <4A(each channel)
- Output power: 12V<96W,24V<192W



External Dimension



Unit: mm

Interface Specifications



4 and 5: power input, input voltage range: 12-24V, 4 for positive, 5 for negative.

1,2 and 3: power output, output voltage is 12-24V, Max output current is 8A, 3 for positive, 1 for the cool color lamp interface, 2 for the warm color lamp interface.

Controller instruction:

1. Button function:



: set key for color-temperature, up to 50 touch points.



: turn on/off controller at any state; when in an open state, long press the button more than 3 seconds to open or close the output of the buzzer.

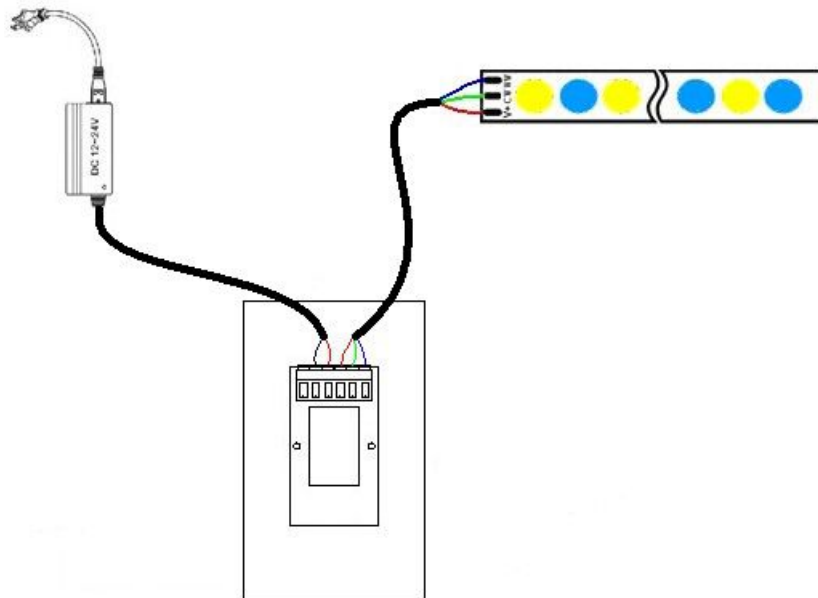


: brightness reduce, a total of 80 levels;



: brightness increase; a total of 80 levels.

Typical Application



Installation Method

1. Wiring

Connect wiring according to typical application. Refer to typical application.



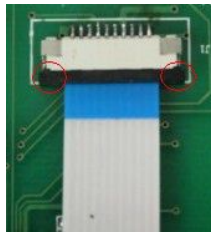
2. Open the panel

Gently pry gaps in touch panel with a screwdriver, and then you can slowly remove the panel, as shown below;

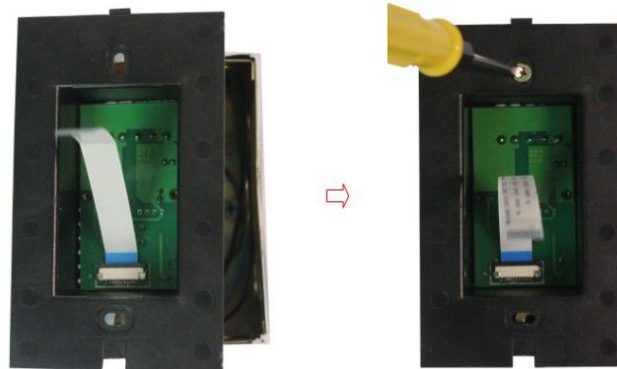


3. Install switch base

Step 1: Remove the ribbon cable. Press the place which marked by red circle and pull out to remove the ribbon cable, push in to press it hard. Like the figure below:

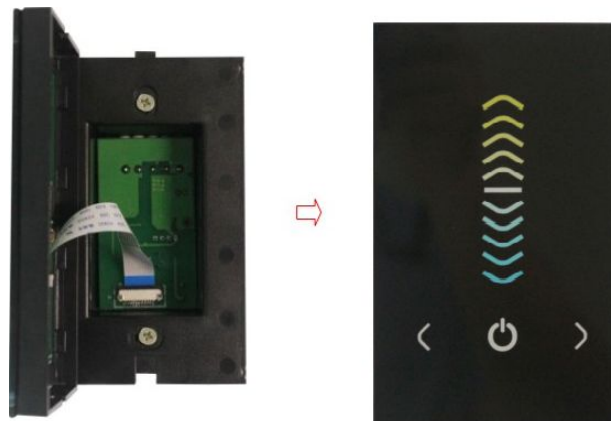


Step 2: Put touch panel controller in the cassette on the wall, screw it on the wall, then install the switch base on the wall. See pictures below:



4. Cover touch panel

Look at the direction of touch panel, install the ribbon cable, and then cover the touch panel.



Remarks:

1. Connect the load wire at first, following by the power wire; **Please ensure short circuit can not occur between connecting wire before you turn on the power;**
2. The supply voltage of controller ranges in DC12V~DC24V, it may burn out the controller once exceed the voltage ranges.