

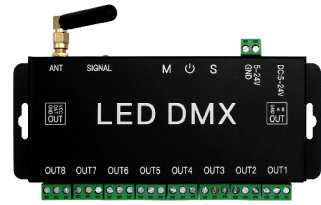
LED DMX CONTROLLER MANUAL

Technical Parameters

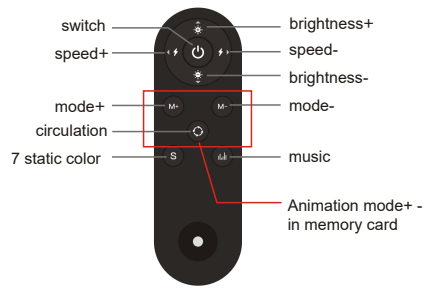
Product name	LED DMX controller
Support system	Android 4.4 and above/iOS 11.0 and above
Connection mode	Bluetooth 4.0/ WIFI
Controller	10 keys

Product Description

Controller



Remote Control



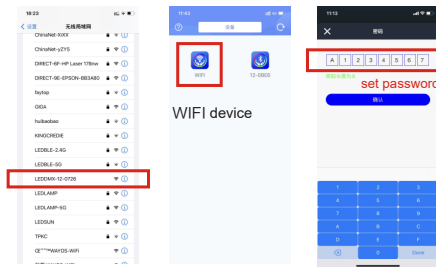
Download application software

Please search for "LED DMX" in major application markets: or scan the QR code below



Password Setting

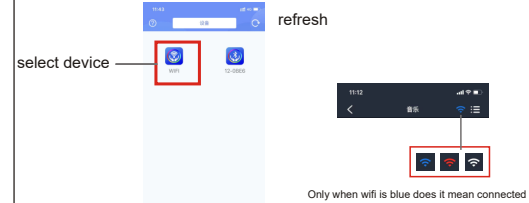
1. Open the APP, select the WIFI device, and click "Material Library" in "Load Video" to refresh the animation.
2. After the controller is powered on, open the mobile phone system WIFI, find the LEDDMX-12-XXXX connection, open the APP, select the WIFI device, then the password setting will pop up, press and hold the S and M keys on the controller at the same time, and then enter the setting password in APP, the light flashes three times with white light. Password is set successfully. (initial factory password is A1234567. Please reset the password. The best password is English + numbers).



☆First you need to turn on the Bluetooth and wifi functions of the mobile phone system.
☆Android phone users must also turn on the location function and allow permissions.

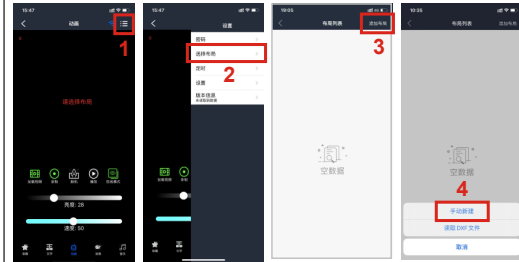
WIFI Version Operation

On the homepage interface, the APP will automatically search for nearby devices, or you can click the "refresh" button in the upper right corner and select the "WIFI" device to enter the lighting control interface.

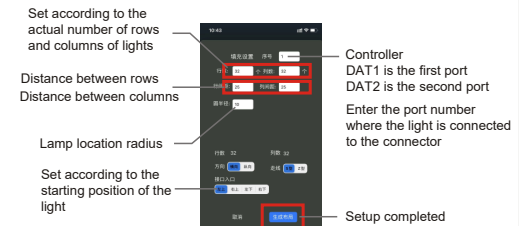


Create a new layout first

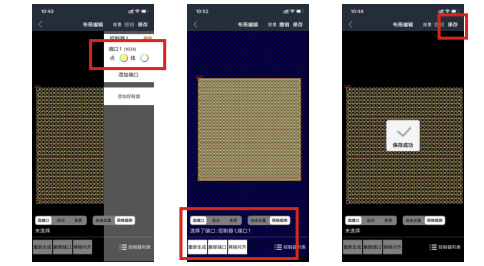
Create a new layout, click the "Select Layout" button, enter the layout list, and add a layout



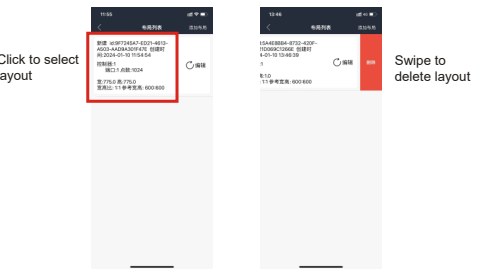
Select "Controller List" to add a port, and after completing the corresponding settings, click "Generate Layout"



After completing the layout, please select the port/controller. The buttons at the bottom can be used for editing, port editing, pixel editing, and background settings. After editing is completed, click "Save" in the upper right corner.

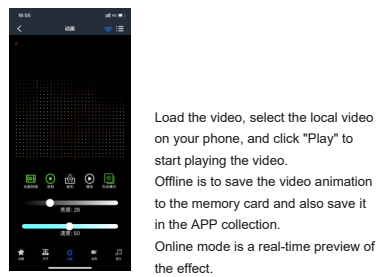
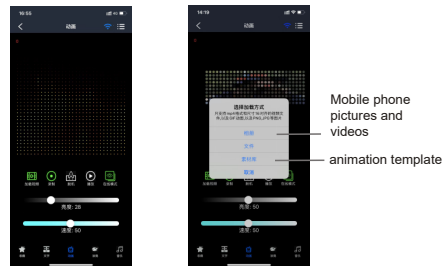


Select port: Select the port to edit
Select point: Select any point
Free position: Move the port position at will
Grid snapping: When moving a port, it will be automatically aligned on the adjacent grid.



Animated Interface

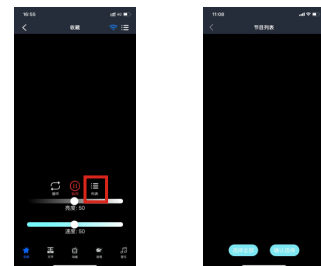
Load video: Select local videos/pictures on your phone. Online mode: real-time effect preview.



Load the video, select the local video on your phone, and click "Play" to start playing the video. Offline is to save the video animation to the memory card and also save it in the APP collection. Online mode is a real-time preview of the effect.

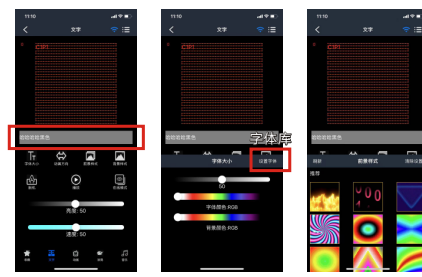
Collection interface

Offline files are all in the collection, and files in the list can be clicked to play directly.



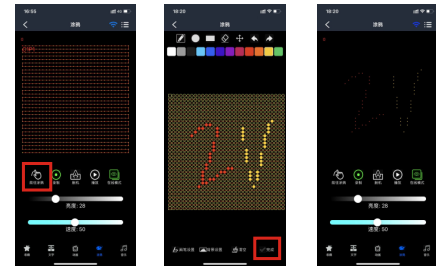
Text Interface

You can enter text, edit text size, select font, animation, direction and style.



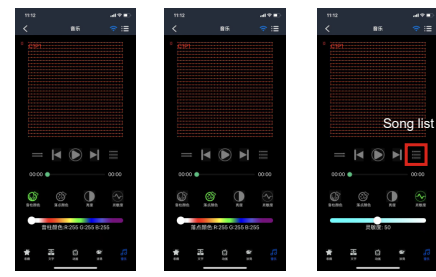
Graffiti Interface

Click "Go to Graffiti" to enter the graffiti editing interface, DIY graffiti, edit brush size, style, background settings, and click "Finish".

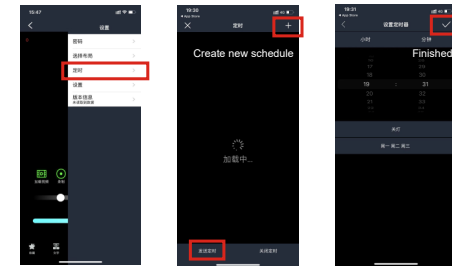


Music Interface

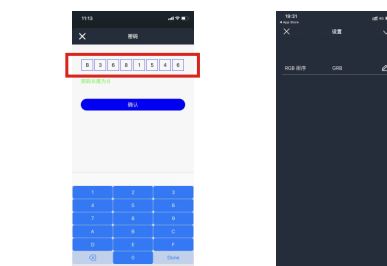
Set sound column color, drop point color, brightness adjustment and sensitivity adjustment.



Settings in the upper right corner: You can change password, create new layout, schedule settings and set sorting.



After creating a new schedule, please click Send Schedule

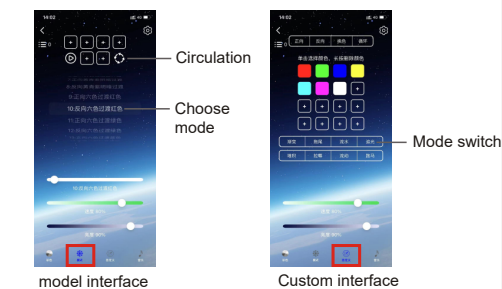
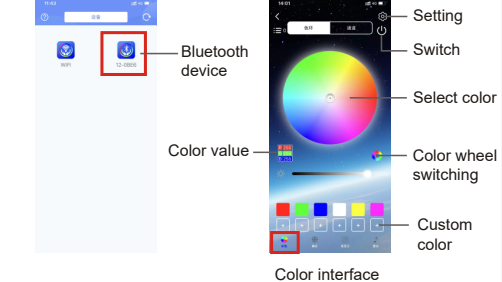


Change password

Set sort

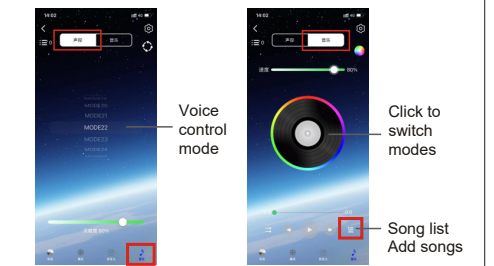
Bluetooth Version Operation

On the homepage interface, the APP will automatically search for nearby devices, or you can click the "Refresh" button in the upper right corner and select "Bluetooth Device" to enter the lighting control interface.



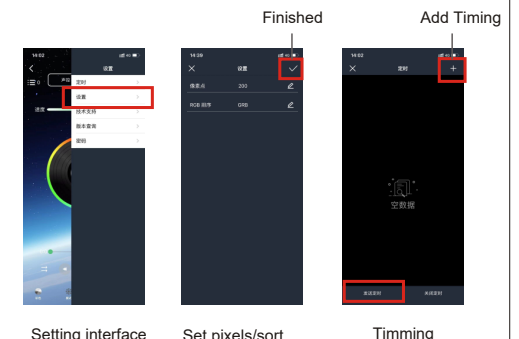
model interface

Custom interface



Music-Voice Control Interface

Music-Music interface



Setting interface

Set pixels/sort

Timing