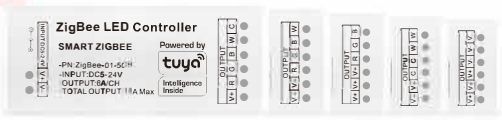


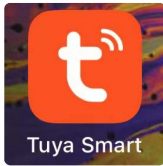
# User Manual

Zigbee controller

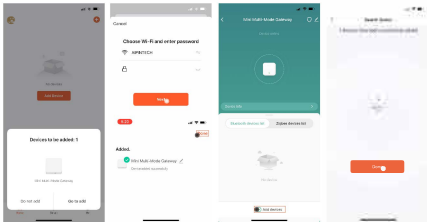


## Operation instruction:

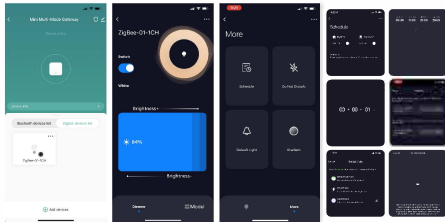
1. Scan the QR code (or search TUYA' on Google Play or App Store) to download the TUYA App.
2. Open and log in to your application



3. Ensure the Internet status of smartphones. After entering doodle APP, the phone will automatically recognize your gateway and click Go to Add to connect.
4. Input WiFi password for connection (incorrect WiFi password will lead to connection failure)
5. Click Done to enter the gateway control interface
6. Click Add Devices to Add controller (please place gateway, controller and smart phone close to each other for quick pairing identification)
7. The smart device has recognized it. Click Done to enter the next interface

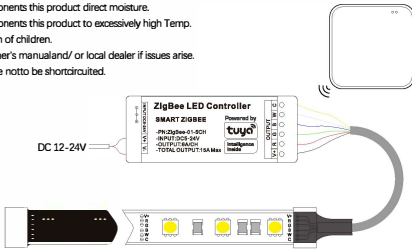


7. Click the lamp to enter the control page
9. On the Static Color Control page, you can combine any static color using the brightness
10. Freely name the lamp products for more comfortable use
11. This product has timing function, can be set freely to turn on and off the light, more comfortable and convenient.
12. This product has memory lighting, initial lighting and DIY lighting functions, making it more convenient to use.
13. This product has power failure do not disturb mode, can make the lamp when the call to keep shut down state, do not disturb the user to rest.



## Cautions:

1. Don't expose the components this product direct moisture.
2. Don't expose the components this product to excessively high Temp.
3. Please keep out of reach of children.
4. Please consult your owner's manual and/or local dealer if issues arise.
5. The supply terminals are not to be shortcircuited.



## Accessories list:

